

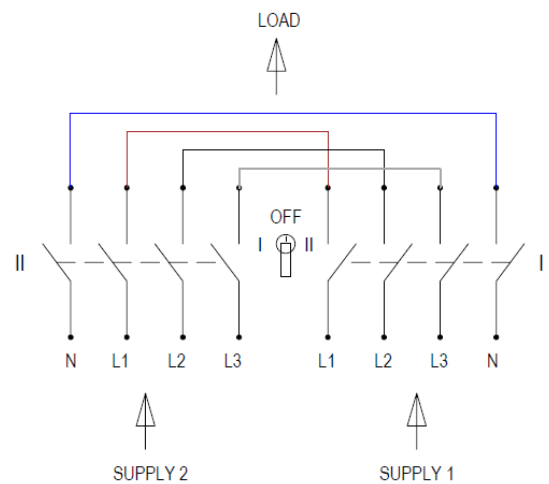
# Product Data Sheet



|                              |                       |                                  |                              |
|------------------------------|-----------------------|----------------------------------|------------------------------|
| Product Code: <b>TCO1004</b> | Issue No.<br><b>A</b> | Issue Date:<br><b>04/10/2017</b> | Issue by:<br><b>T. Tombs</b> |
|------------------------------|-----------------------|----------------------------------|------------------------------|

**Description:**  
Manually operated, 100A, 4 pole changeover switch.  
Only one supply can be switched on at a time.

|   |   |
|---|---|
| <b>General Characteristics</b>          |   |
| Standards.                              | BS EN 60947-3   |
| Current rating.                         | 100A AC-21A, AC22A & AC23A.<br>63kW   |
| Voltage rating.                         | 230 / 400V ac   |
| Short circuit back & up protection      | 100kA 100A gG fuse.   |
| Mechanism.                              | 2 position and Off.<br># Padlockable.   |
| Enclosure.                              | 1.5mm galvanised mild steel back plate.<br>1.2mm mild steel front, side and end plates. |
| Paint finish.                           | Matt grey to RAL 7035,<br>Electrostatically applied.                                    |
| IP Rating.                              | 3X  |
| Pollution degree.                       | 3   |
| No of poles.                            | 4, switched.  |
| Terminal capacity.<br>Minimum – Maximum | 35mm.sq. – 50mm.sq.   |
| Terminal tightening torque.             | With dome washer – 12Nm<br>With M8 nut, bolt & spring washer - 20Nm.                    |
| Cable entry facility.                   | Removable blank end plate for on-site drilling.   |
| Covers / Door.                          | Screw fixed hinged door with interlocked handle. Interlocked in the ON position.        |
| Equipment type.                         | Fixed stationary  |
| Approx. weight.                         | 12 kg   |



The switch can be reverse connected so that one supply can be used to feed only one of two loads at a time.

# Padlock facility – The handle surround has 3 breakout portions allowing the user to select which positions the switch can be padlocked in. I, II or OFF.

# Product Data Sheet



Product Code: TCO1004

Issue No.

Issue Date:

Issue by:

A

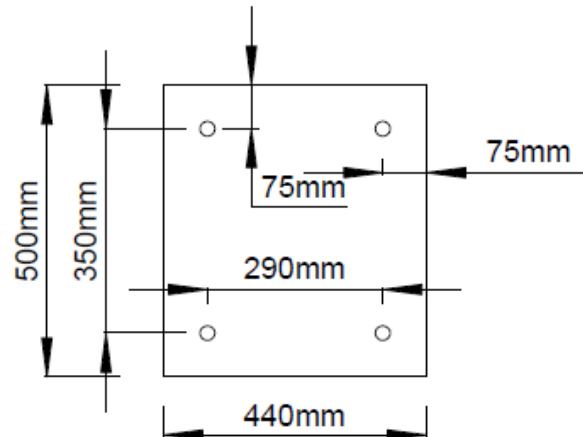
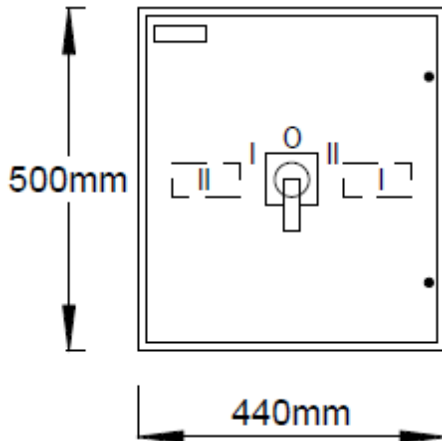
04/10/2017

T. Tombs

**Description:** Manually operated, 100A, 4 pole changeover switch.

## Key Dimensions

## Mounting hole positions

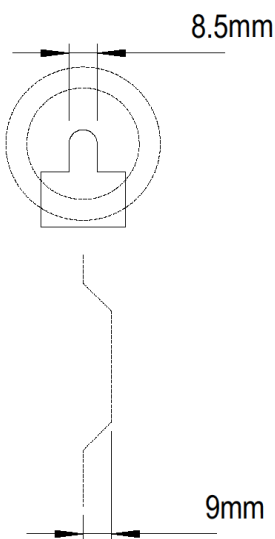


Depth of case – 175mm

Depth of handle – 50mm

Mounting hole detail.

Hole detail suitable for M8 bolts



Additional information.

### Usage

Intended for use by skilled persons or instructed persons.

### Electrical

Earth bolt.

Rated frequency: 50 / 60Hz.

Rated operational voltage: 230 / 400V ac

Rated insulation voltage: 750V

Uimp: 8kV

EMC environment: Environment type A.

### Physical

Ambient operating temperature -5 to 40 °C

(Not exceeding average of 35 °C in any 24 hour period).

Maximum altitude 2000m.

Enclosure: Mild steel.

### Installation

Service conditions: Wiring of this product must comply with current IEE regulations. Units are intended for indoor use and dry conditions and **NOT** where high levels of humidity and temperature are experienced.

Note: IP rating of enclosures can be compromised if correct use of glands is not followed when installing unit.