



TESLA

POWERWALL

CERTIFIED INSTALLER

Powerwall Job Check Out

Job Check Out

The **Job Check Out (JCO)** should be submitted after completion of a Powerwall installation

The JCO enables Tesla to have visual records of installations and will provide valuable insight when trying to troubleshoot sites remotely

The report will help us provide a better service to you and your customers and assist with our Quality management

The form has been made as short as possible

Each Month an award will be given for the Number of submissions.



Start: Basic info

Step 1

Scan QR code
or go to: <https://cutt.ly/TeslaUK>



Step 2

Fill in “Your Details”

Your Details

Installer Email *

Installer Company *

Gateway Part Number and Serial Number *

Type of Energy Gateway *
-Select- ▼

Cable

Powerwall AC Cable *
-Select- ▼
Size of AC cable

What type of communications cable was used ? *

Step 3: Cabling details

Enter details regarding:

- AC cable
- The communication & power cables between Powerwall and Gateway

Cable

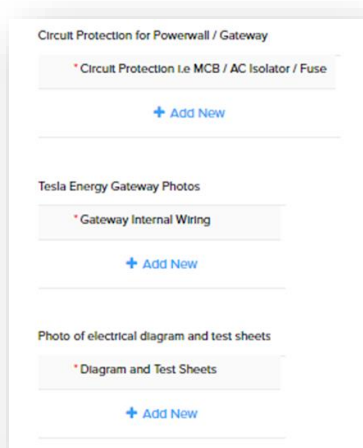
Powerwall AC Cable *

Size of AC cable

What type of communications cable was used ? *

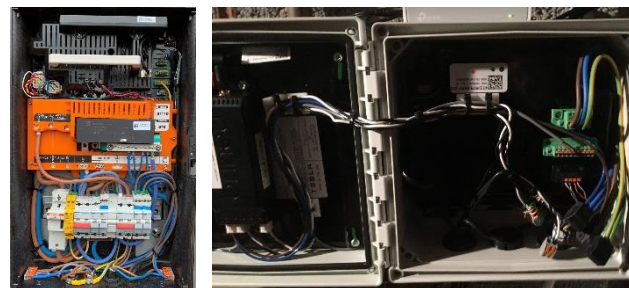
Step 4: photos

Photos can be taken on the phone or uploaded, make sure to get clear well lit photos



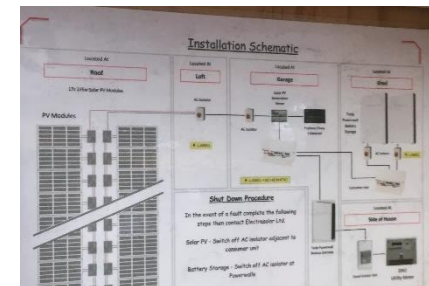
Circuit Protection

Take a photo of any associated electrical equipment for the Powerwall. I.e. Fuse boards, Isolators



Gateway Wiring

Take a photo of the internals of your finished gateway.



SLD and Test Cert

Take a photos of the single line diagram and test cert.

This is almost the most important photo

More photos

Powerwall Wiring

* Powerwall AC Wiring Compartment

+ Add New

Overview Photo of the Powerwall Installation

* Full photo of whole installation

+ Add New

Additional Photos

Additional Photos

+ Add New



Powerwall Wiring

Powerwall AC wiring chamber, and any other photos you think could help.



Overview Photo

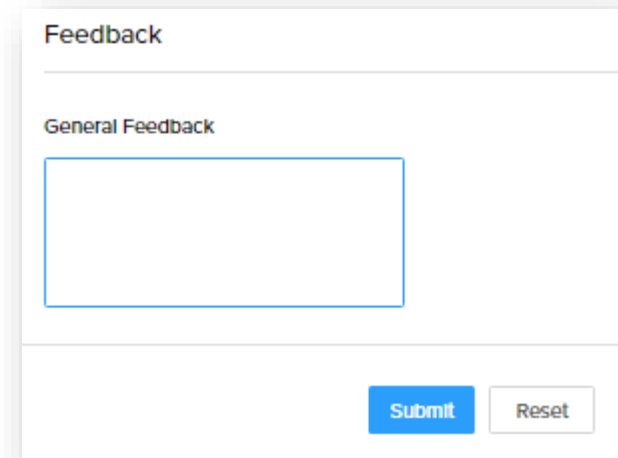
Take a photo capturing as much of the installation as possible. *Show off your excellent install!*



Additional

Take a photos of anything you think is relevant or special. *Show why you are No1!*

Finally



The image shows a screenshot of a web form titled "Feedback". Below the title is a horizontal line. Underneath, the text "General Feedback" is displayed. A large, empty rectangular text input field is positioned below the text. At the bottom right of the form, there are two buttons: a blue "Submit" button and a white "Reset" button with a grey border.

Tell us anything you would like to share
(ideas or issues you experienced)

Hit the “Submit” button