

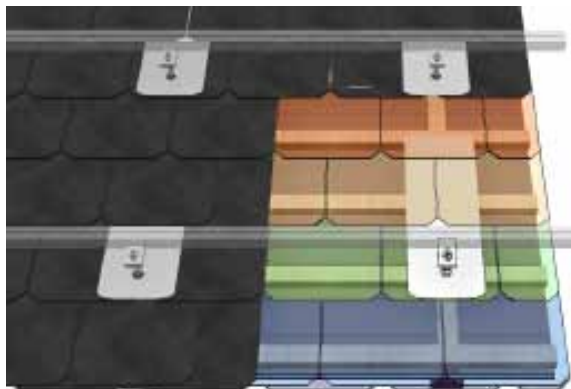
SlatePlan

- Accessory product to facilitate the application of hanger bolts on shingle roofing
- Fail-safe and simple assembly
- Application of quality materials (VA 1.4301 and EPDM)
- Designed for roof-parallel application and for tilted systems in combination with hanger bolts.
- Direct and therefore tight connection to the roof substructure



SlatePlan can be used on shingle roofing e.g. bitumen, fibre, cement or slate for connecting hanger bolt systems used in conjunction with solar plants.

SlatePlan is integrated into a shingle roof to seal holes drilled to accommodate hanger bolts. A sealing ring applied to the underside also prevents penetration of water from the sides. SlatePlan is anchored to the bearing wood substructure together with the hanger bolt. Optimal sealing properties are thus achieved with minimal assembly effort.



Once the roof inclination has been verified, please ensure that a corresponding variant of the SlatePlan is selected and, notably, that the appropriate overlap distances are observed.

Three product variants are available depending on the different roof layouts. The required length of the sealing plate also depends on how far between the roof shingles the SlatePlan can be inserted. The appropriateness of design must be verified in each case by the customer (technical data on Page 2)

Combination options



- 110010-200** Hanger bolt kit 10x200 mounted M10x200 mm / 7.9 inches
- 110012-200** Hanger bolt kit 12x200 mounted M12x200 mm / 7.9 inches
- 110012-300** Hanger bolt kit 12x300 mounted M12x300 mm / 11.8 inches

Pre-assembled hanger bolt kit with vulcanized EPDM-seal (UV-resistant) and 3 flange nuts in V4A, assembled



- 111110-200** Fastening kit for corrugated roofs 10x200 KlickTop M10x200 mm / 7.9 inches
- 111112-200** Fastening kit for corrugated roofs 12x200 KlickTop M12x200 mm / 7.9 inches
- 111112-300** Fastening kit for corrugated roofs 12x300 KlickTop M12x300 mm / 11.8 inches

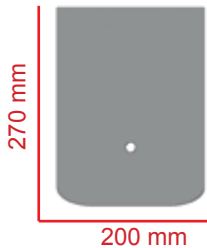


KlickTop corrugated roof fastening kit incl. KlickTop kit, hanger bolt with vulcanized EPDM-seal (UV-resistant) and 3 flange nuts in V4A



- 111010-200** Fastening kit for corrugated roofs 10x200 KlickTop M10x200 mm / 7.9 inches
- 111012-200** Fastening kit for corrugated roofs 10x200 KlickTop M10x200 mm / 7.9 inches
- 111012-300** Hanger bolt kit 12x300 mounted M12x300 mm / 11.8 inches

Corrugated roof fastening kit incl. mounting plate, hanger bolt with vulcanized EPDM-seal (UV-resistant) and 3 flange nuts in V4A

Technical data

Material	SlatePlan Stainless steel 1.4301 Sealing: EPDM		
Application	For horizontally overlapping shingle roof coverings with a substructure appropriate for the application of hanger bolts.		
Dimensions	Common bitumen shingles	Shingles of up to 400 mm in length	Shingles of up to 600 mm in length
			
	Item no.: 109017-000	Item no.: 109017-001	Item no.: 109017-002
Auxiliary equipment	To achieve optimal results whatever the roof type, the SlatePlan can be supplemented by any of a number of hanger bolt system designs. Information relating to these interchangeable fasteners can be found under the sub-point "Combination options"		

Further information and warranty declaration at www.schletter.eu

*in accordance with the respective Product Sheet and with our General Terms and Conditions of Sale and Supply (www.schletter.de/AGB_en)
Subject to changes and/or technical modifications.