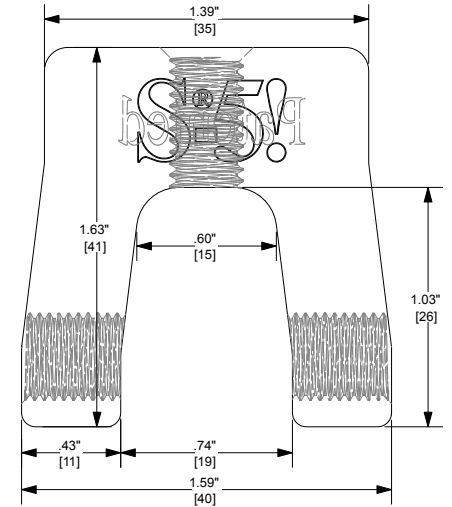
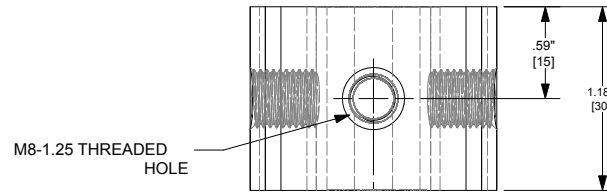
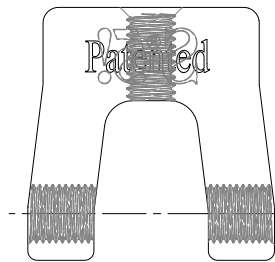


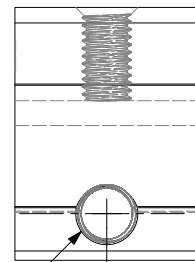
TOP



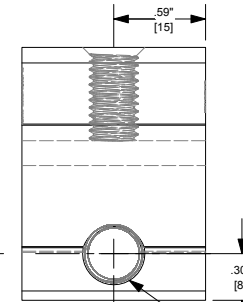
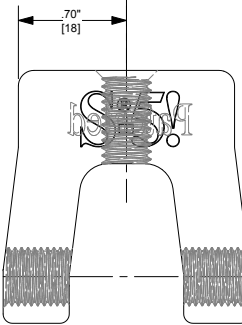
SCALE: 2X



3/8-24 THREADED HOLE



Dimensions: .59" [15], .30" [8]

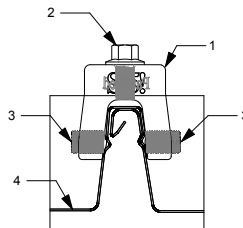
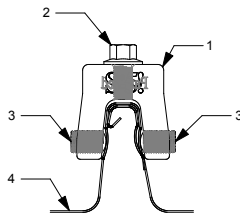


3/8-24 THREADED HOLE

FOR STANDING S EAM SPECIFIC MECHANICAL LOAD TEST INFORMATION AND CLAMP INSTALLATION INFORMATION PLEASE VISIT: WWW.S-5.COM

Notes

1. S-5-R 465 MINI
2. M8-1.25 X 16MM HEX FLANGE
3. 3/8-24 X .8" ROUND POINT
4. EXAMPLE PROFILE



MATERIAL:	6061 T6
EST ASSEMBLY WEIGHT :	
SUPPLIED HARDWARE:	(1) M8-1.25 X 16MM (16MM HEX) 18-8 SS (2X) 3/8-24 X .800" 18-8 SS
SCALE:	1:0.75
OTHER:	

METAL ROOF INNOVATIONS, LTD.
8655 TABLE BUTTE RD
COLORADO SPRINGS, CO 80908

719-495-0518
719-495-0045
(EAX)

TITLE: S-5-R 465 MINI			
DRAWING NO.	R465-A-1-A CCD	DRAWN BY	DMMH
		DATE	05/15/2012

S-5® PRODUCTS ARE PROTECTED BY MULTIPLE U.S. PATENTS INCLUDING 5,228,248, 5,983,588 AND 6,164,033 (OTHERS ISSUED AND PENDING). EUROPEAN PATENTS ARE ALSO APPLIED FOR AND PENDING UNDER THE PATENT COOPERATION TREATY WITH DIVISIONAL FILING RIGHTS RETAINED. METAL ROOF INNOVATIONS, LTD. (LICENSOR OF S-5® TECHNOLOGY) AGGRESSIVELY PROSECUTES PATENT INFRINGEMENT.