

# **Pelio-L-5.12**

## **WI-FI Set-up Guidance**

---

# Instructions

<b>Step 1: Install WI-FI Logger .....</b>	<b>3</b>
<b>Step 2: WI-FI Network Config .....</b>	<b>4</b>
<b>Step 3: Create Plant .....</b>	<b>8</b>
<b>Step 4: Add Collector .....</b>	<b>9</b>
<b>Appendix: Pylontech Home APP User's Guide .....</b>	<b>11</b>



**Please note:**  
**You must read this instruction manual carefully before installation to ensure you can install and use your battery correctly.**

**This document describes how to configure Pelio-L-5.12 of the Wi-Fi logger and how to set up the Pylontech Home APP.**

**Step 1: Install Wi-Fi logger**


1. With the front of the logger (with the label) facing outwards, insert it into the WI-FI USB port;
2. Rotate the nut on the top of the logger **clockwise** until the buckle fits into the card slot, then rotate the nut half a turn to lock the WI-FI logger.


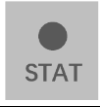


**Please note: The white button on the front of the WI-FI logger (Logger Button) is used to trigger some functions of the logger.**

- Short Press (2s~6s): The NET LED flashes fast, logger enters network configuration mode.
- Long Press (over 10s): Logger restore factory settings, only the STAT LED is on.
- The NET LED is on, the STAT LED flashes and the COM LED flashes intermittently, indicating that the collector is working normally.

Refer to the table below to understand the status of the WI-FI logger indicator LED.

LED	LED Function	Status Description
 COM	Indicate the communication between the logger and the battery	1. LED off: Indicates that the logger failed to communicate with the battery 2. LED on: Indicates that the communication between the logger and the battery has been successfully established 3. LED fast flash: Indicates that the logger and the battery are communicating.

	<p>Indicate logger network communication status</p>	<ol style="list-style-type: none"> <li>1. LED off: Indicates the logger network connection is abnormal.</li> <li>2. LED on: Indicates the logger network connection is normal</li> <li>3. LED fast flash: Indicates the logger enters network configuration mode</li> </ol>
	<p>Indicate the status of the logger</p>	<ol style="list-style-type: none"> <li>1. LED off: The logger is running abnormally.</li> <li>2. LED flash: Indicates the logger is running normally.</li> </ol>

## Step 2: WI-FI Logger Network Configuration



**Please note:**

Make sure the battery is turned on during network configuration

1. Download 'Pylontech Home App'. Download method is given below:
  - a. Search 'Pylontech Home' in Google Play/Harmony store or APP Store.
  - b. Scan the QR Code below and download it directly.



Android/Harmony QR Code



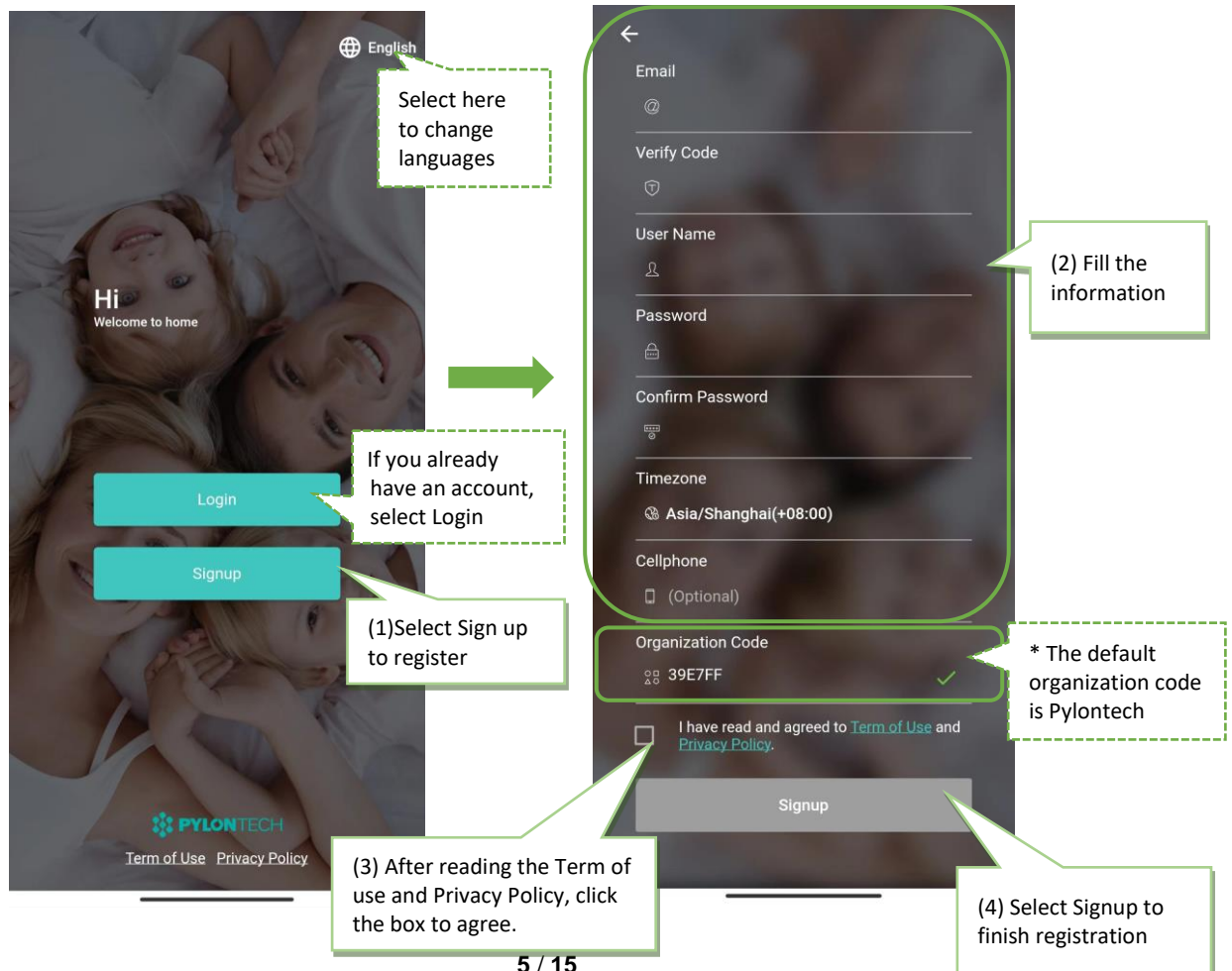
iOS QR Code

2. Open Pylontech Home App, sign up and login.

- New users can sign up following the steps below (1)(2)(3)(4)
- If you already have an account, just enter the account and password to login

\* Organization code defaults to Pylontech. If the distributor provides you with other organization codes, please keep the corresponding codes and fill in the codes when registering an account. The organization code is used to bind the corresponding organization to obtain the after-sales service provided by them.

**Please note:** Make sure the org code is correct. If you have any questions about this, please contact your local distributor for confirmation.



The image shows a sequence of two app screens. The first screen is the login/signup page with a 'Hi Welcome to home' message and 'Login' and 'Signup' buttons. The second screen is the registration form with fields for Email, Verify Code, User Name, Password, Confirm Password, Timezone, Cellphone, and Organization Code. A 'Signup' button is at the bottom.

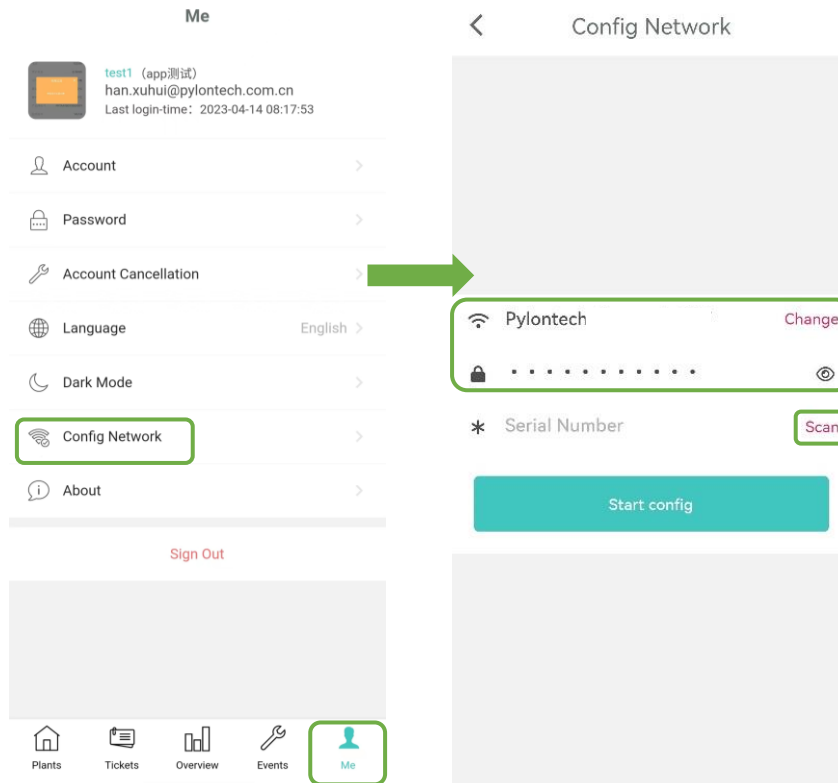
Callouts and instructions:

- (1) Select Sign up to register:** Points to the 'Signup' button on the first screen.
- If you already have an account, select Login:** Points to the 'Login' button on the first screen.
- Select here to change languages:** Points to the 'English' language selector in the top right of the first screen.
- (2) Fill the information:** Points to the registration form fields on the second screen.
- \* The default organization code is Pylontech:** Points to the 'Organization Code' field on the second screen, which shows '39E7FF' with a green checkmark.
- (3) After reading the Term of use and Privacy Policy, click the box to agree:** Points to the checkbox and text 'I have read and agreed to Term of Use and Privacy Policy' on the second screen.
- (4) Select Signup to finish registration:** Points to the 'Signup' button at the bottom of the second screen.

### 3. Wi-Fi logger network configuration

**Please note: Wi-Fi logger only supports 2.4GHz Wi-Fi network, 5GHz Wi-Fi cannot be connected.**

- (1) Turn on the Bluetooth, Wi-Fi and location services (GPS) of the mobile device.
- (2) Press the white button on the front of the logger for 2~6 seconds and then release it until the NET indicator on the logger flashes quickly, at this time the logger enters the config network mode (the NET light of the logger is always on during the network config process) .
- (3) After logging in to the Pylontech Home App, enter the "Me" page and select "Config Network". At this time, the window will automatically pop up "Network Configuration Instructions" (new configuration instructions and screenshots are required), reading this instruction can guide you in network configuration.
- (4) Select the Wi-Fi network to be configured and enter the corresponding network password.

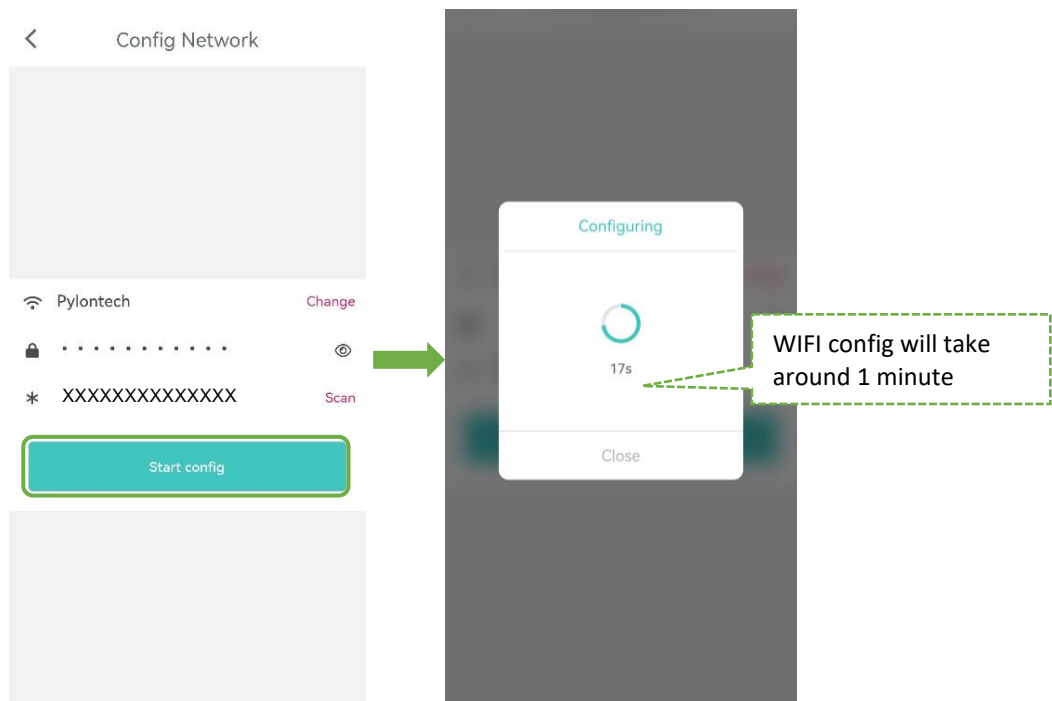


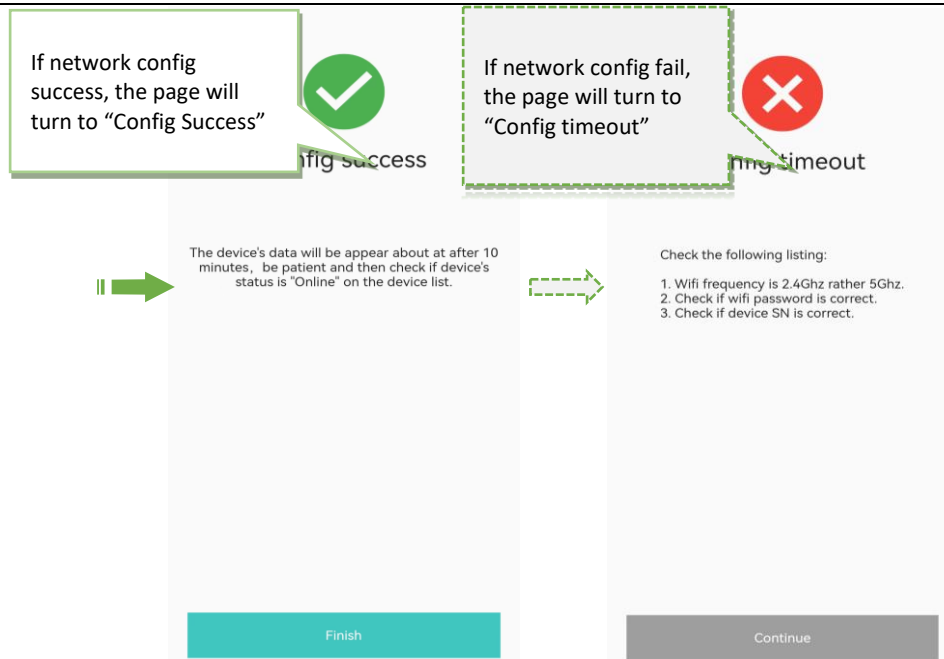
(5) Enter the S/N of the logger

- Method 1: Select 'Scan' to get the QR code of the WIFI logger
- Method 2: Type in the SN on the logger manually



(6) Select "Start config", the progress will take around 1 minute





Note: After selecting 'Start Config', if you confirm that the device has exit config network mode (see the first step to confirm the status of the flashing light on the logger), you can click "Close", and re-try the above step (2) then clicking "Start Config".

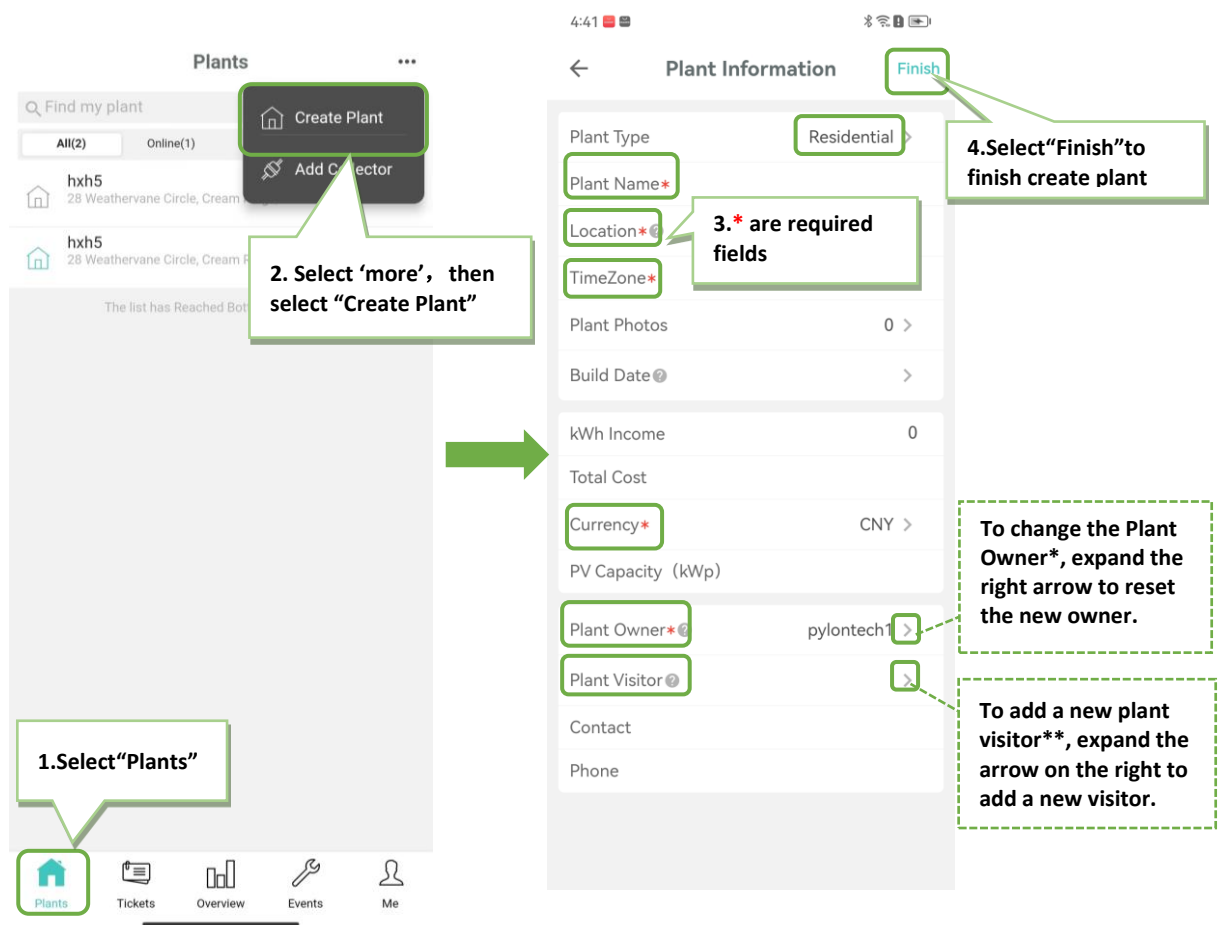
**Please note:** if the network config fails, please check the following reasons and re-configure the network according to the above steps:

- Make sure WLAN is ON;
- Make sure the Wi-Fi network;
- Check whether the Wi-Fi network password is entered correctly;
- Make sure the wireless router is not blacklisted;
- Remove special characters in Wi-Fi network name;
- Shorten the distance between mobile phone and device, device and router;
- Try to connect another Wi-Fi network.



### Step 3: Create Plant

1. Select "Plants" and enter plant page;
2. Select 'more', then select "Create Plant";
  - Fill in the plant information (\* is required information);
  - Plant Owner: About Plant Owner, please note the following settings:
    - a. Plant Owner name is automatically generated when registering an account. If you want to change the name of Plant Owner, please do the following steps after "Create Plant":  
Exit the current page → enter the "Me" page → Select "Account" → Enter your custom name in the "Nick Name" column → Select "Confirm and Save" under the current page to complete the modification.
    - b. If you want to reset Plant Owner, expand the right arrow to reset the new owner.
  - Plant visitor: Select Plant Visitor, you can add a plant visitor
3. Select "Finish" on the right-up corner, finish create plant.



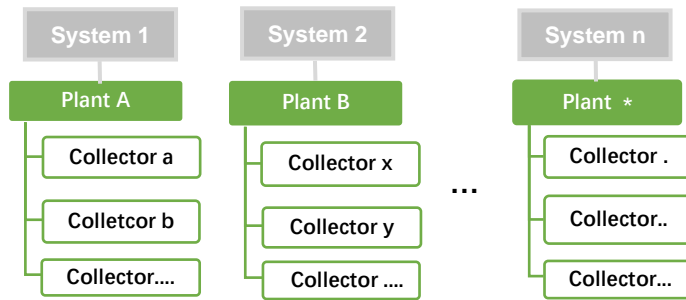
\* **Plant Owner** is the owner of the plant and has full access to the plant, including modifying and deleting the plant, as well as managing all visitors to the plant and setting up new owners.

\*\* **Plant Visitor** is visitor, who has permission to view plant information and add collectors; but does not have permission to delete plants.

**Please note:** You can build multiple plants for different battery systems. If you need to add more power stations, please repeat the above steps.

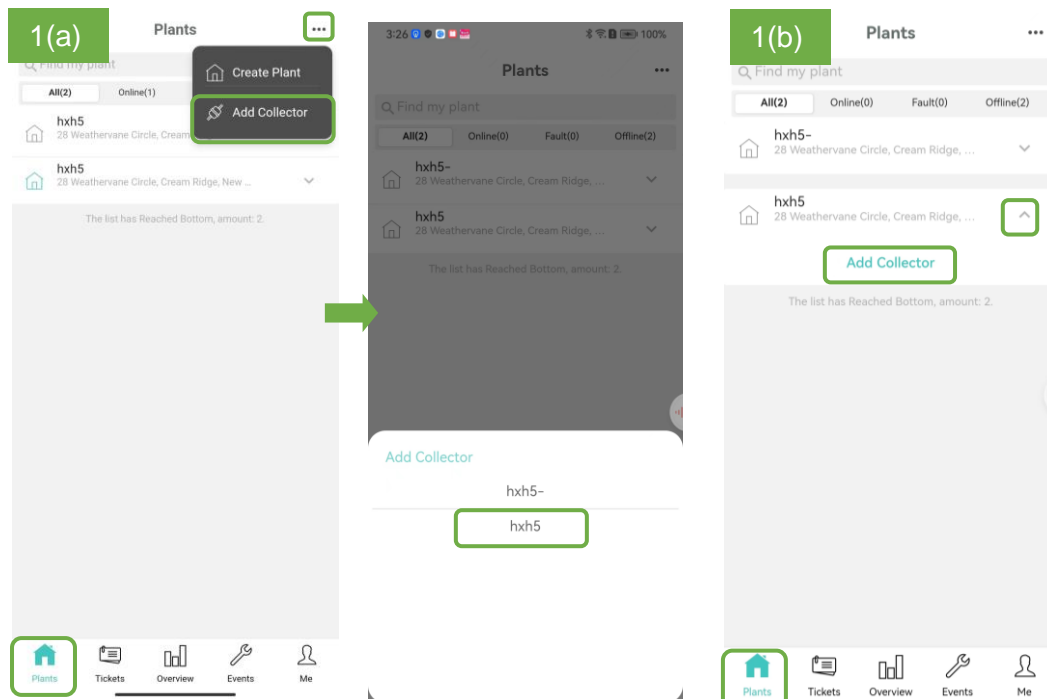
#### Step 4: Add Collector

- **Please note:** In order to facilitate your view and manage the information of **different batteries in the same system**, it is recommended to add their collectors under the same plant.

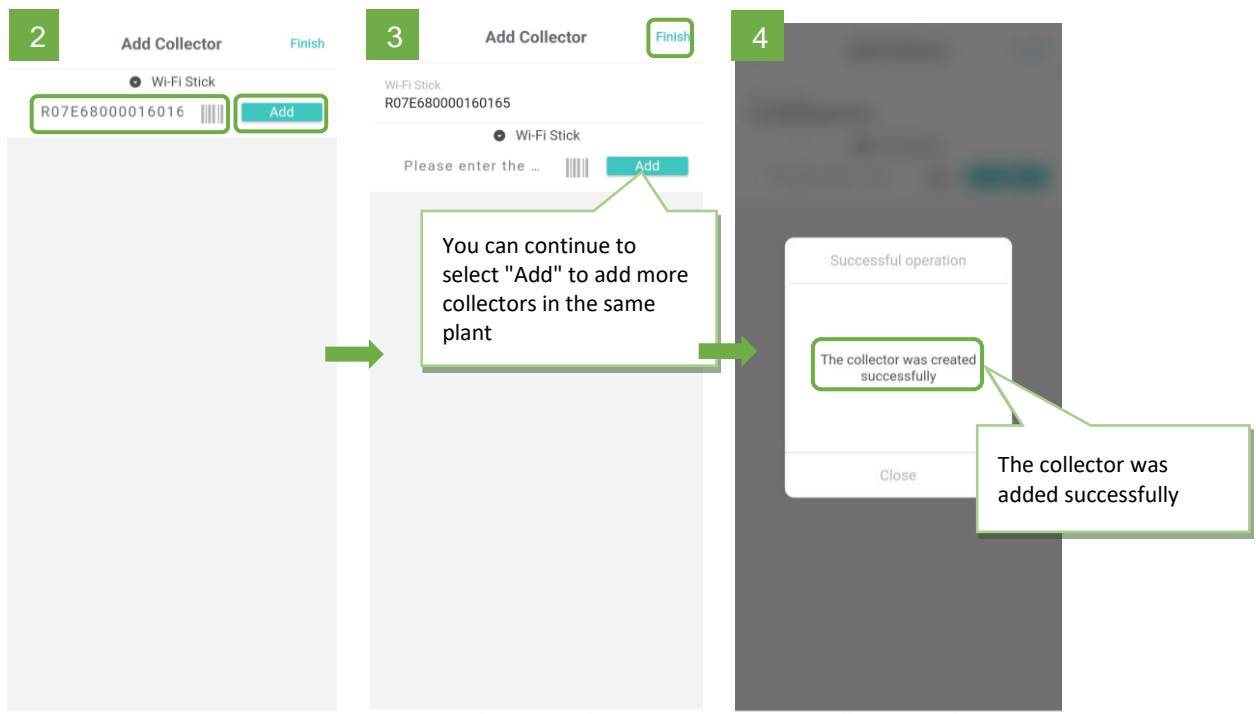


1. Choose one of the following two methods (a or b) to enter the "Add Collector"

- Select "Plants" → Select "More" in the upper right corner → Select "Add Controller" → Select a plant you want to add;
- Select "Plants" → Select the plant and expand the arrow on its right side and Select "Add Controller".

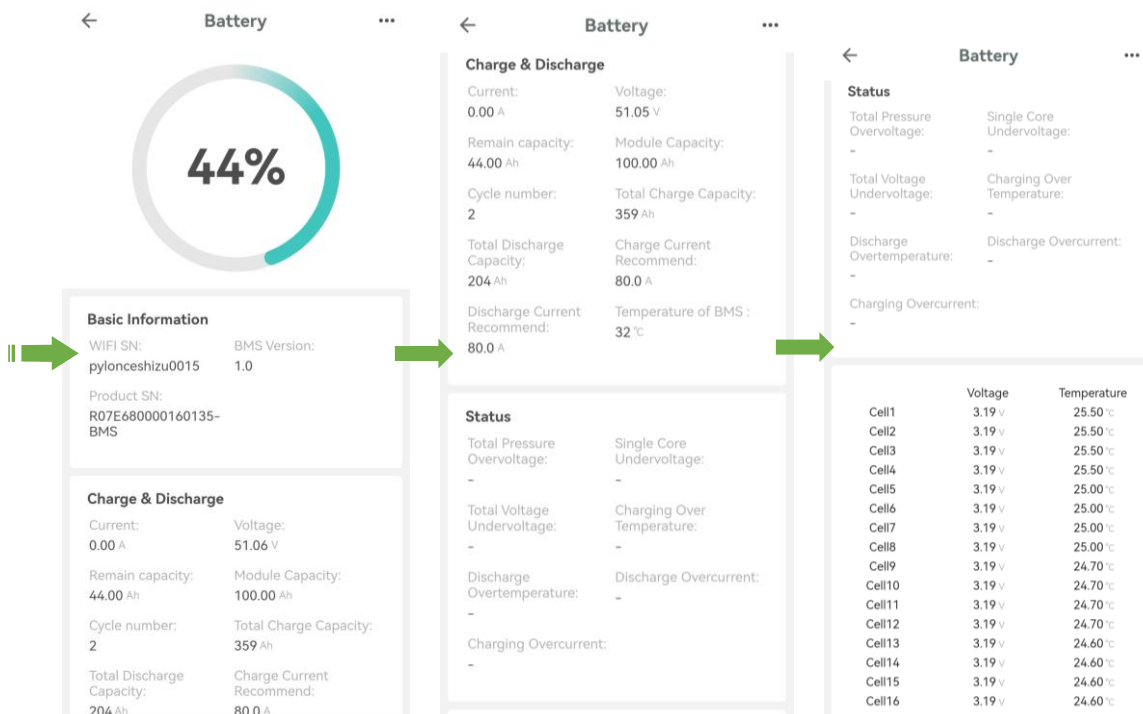
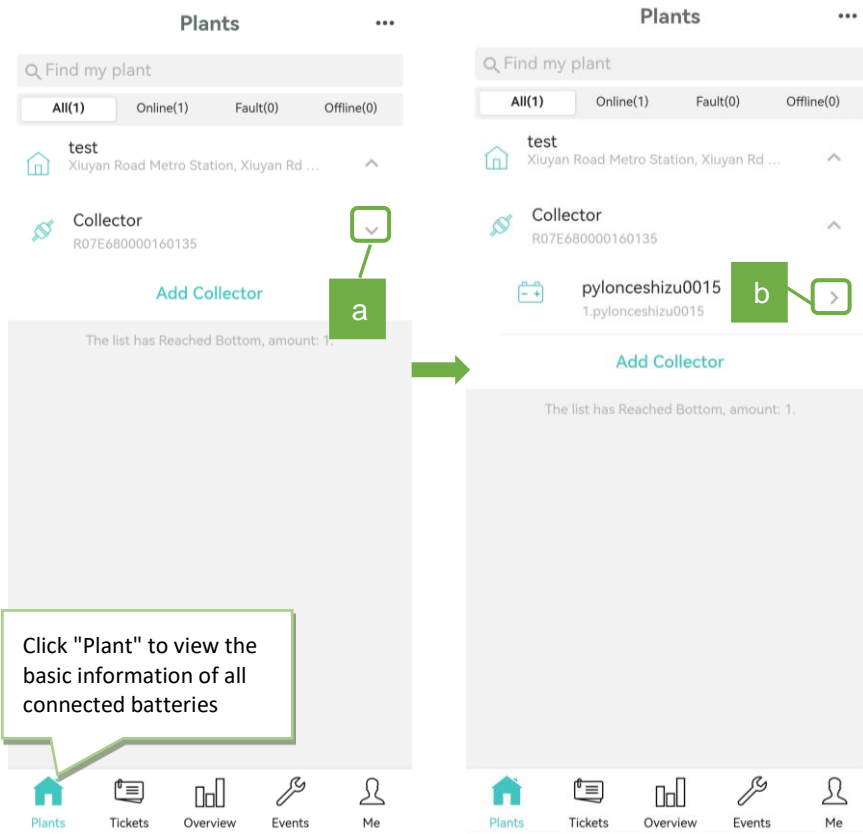


2. Scan the QR code on the front of the Wi-Fi logger or manually enter the SN number of the logger, and Select "Add".
3. After adding, Select "Finish" in the upper right corner to save and exit.
4. The collector was added successfully.



## Appendix: Pylontech Home App user guide

1. Select "Plants" to view the detailed information about the plant you have added.
  - a. Select the plant you want to view, and select the arrow on the right to display all battery information connected to the power station.
  - b. To view battery detailed information, you can expand its arrow to display including battery basic information, charging/discharging parameters and status.



**Note:** For battery information, please refer to the following table:

<b>Basic Information</b>	Wi-Fi SN	SN (serial number) of Wi-Fi logger
	Product SN	SN (serial number) of BMS
	BMS version	Version of BMS software
<b>Charge &amp; Discharge</b>	Current(A)	Current of the battery during its working status
	Voltage (V)	Voltage of the battery
	Remain Capacity (Ah)	Remain capacity of the battery
	Module Capacity (Ah)	Total capacity of the battery module
	Cycle number	Cycle count of the battery that has used
	Total Charge Capacity (Ah)	Total charge capacity of the battery
	Total Discharge Capacity (Ah)	Total discharge capacity of the battery
	Charge current recommend(A)	Recommended charge current for the battery
	Discharge current recommend(A)	Recommended discharge current for the battery
Temperature of BMS(°C)	Temperature of the BMS module	
<b>Status</b>	Total Pressure Overvoltage	It will display “Y” if the described status is triggered; otherwise it will display “-”.
	Single Core Undervoltage	
	Total Voltage Under voltage	
	Charging Over Temperature	
	Discharge Over Temperature	
	Discharge Overcurrent	
Charging Overcurrent		
<b>Cell Data (Cell 1~n)</b>	Voltage (V)	Voltage of the single cell
	Temperature (°C)	Temperature of the single cell

2. You can give us feedback by submitting "Tickets" on:
- Product Advisory
  - System Issue

① Select "Tickets" to upload a feedback

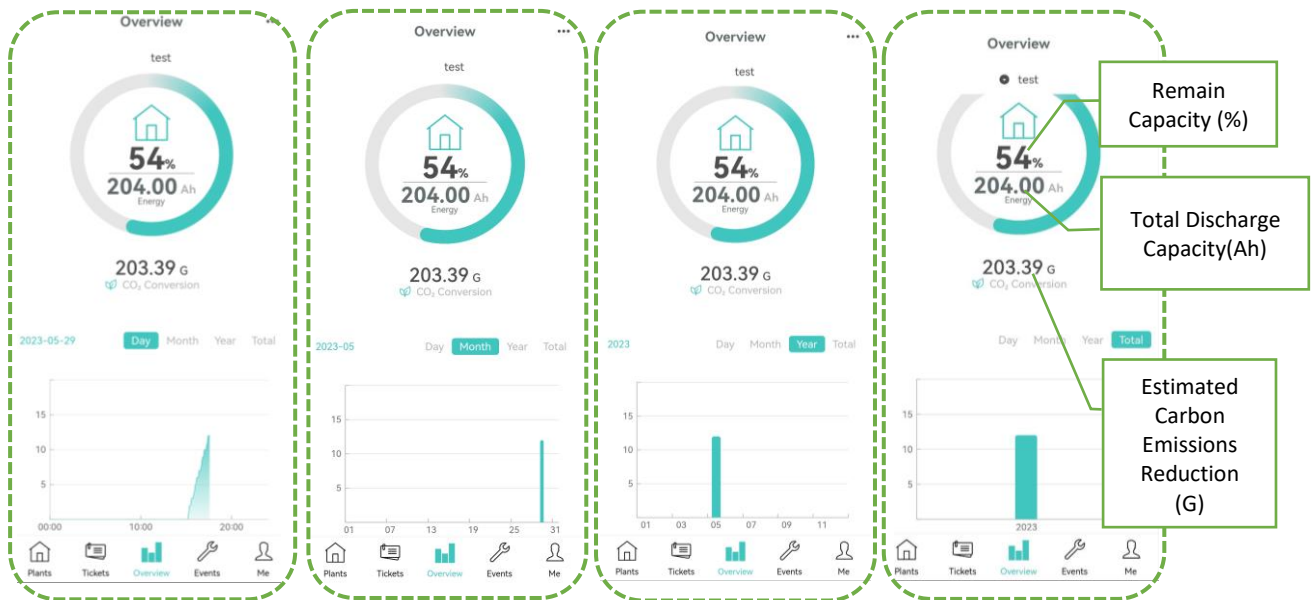
② Select "+" to submit a ticket

③ Choose the ticket type

④ \* are required information; In Description, you can enter a brief description of the problem; In Attachments you can add attachments (such as photos) as a supplement.

⑤ Select "save" to submit the ticket

3. Select "Overview" to view the operation status of your plant (can be viewed by Day/Month/Year/Total)



**Note:** The above overview information is described as follows:

- Taking the above diagram as an example, "54%" is the remaining capacity of the battery (%); "204Ah" is the total discharge capacity of the battery (Ah); "203.39 G" is the estimated carbon emission savings (G).
- The chart shows charged power of the battery in a specific period (day/month/year/total); the horizontal axis shows the time period you selected, and the vertical axis corresponds to the charged power of the battery in this period.

4. Select "Events" to view the alarms or faults that the system detects when the battery is abnormal. Please contact the after-sales service to solve it.
5. Select 'me' and you can log out of the current account or reconfigure a new device.

