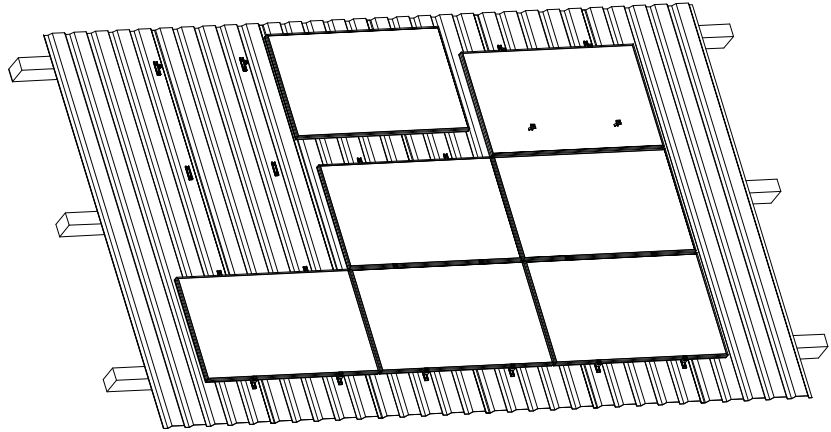


## Technical Datasheet

# MetaSole



### General

System	PV on-roof mounting for trapezoidal sheet in steel and aluminium
Building type	Business-, industry- and agricultural buildings
Roof types	Trapezoidal metal sheet made of aluminium and steel (thickness between 0.40 mm up to 1.50 mm), standing seam roofs Installation on sandwich panel roofs requires manufacturers approval
Material	Stainless steel, Aluminium and EPDM
Module pitch	Parallel to the roof
Net weight	below 1,3 kg per kWp
Roof pitch	min. 5°, max. 45°
Ventilation	Fulfills the guidelines according to the „Regulations of the German Roofing Trade“.

### Module compatibility

Type	framed PV-Module
Module size (max)	Length: unlimited, Width: unlimited
Module guidance	Landscape
Compatibility	Framed modules IEC 61215 / 61646 and IEC61730 certified

### Installation

Installation time	1 kWp < 10 minutes / 0,03 h per m <sup>2</sup> Modulesurface
-------------------	--

### Certifications

TÜV (GER)	yes / 33130
Leak test	yes / MFPA 5.1/10-535
Building authority approval	yes / Z-14.4-627, Z-14.1-4, Z-14.1-537

### Benefits

Product warranty	10 years
Training	yes / On site on request
Configuration on-line	yes
Support	telephone, Online, on-site