

m.ginlong.com Monitoring Guide

**Please note: Select language on
the starting page!**

Contents

1. Solis Second Generation monitoring platform for installers	2
2. Register an installer account	2
3. Using the installer account	3
3.1. Logging in.....	3
3.2. Creating a plant.....	3
3.3. Associate end-customer to the plant.....	5
3.4. Adding device to the plant.....	6
3.5. Testing the system	8
3.6. Monitoring the system	8
3.7. Adding device to the plant.....	8

1. Solis Second Generation monitoring platform for installers

This serves as a guide to help installers create and use their Solis remote monitoring account. Most of the accounts from our old platform (www.ginlongmonitoring.com) have been moved successfully to this new platform.

2. Register an installer account

Open your browser (preferably Google Chrome)

Type in the top bar <http://m.ginlong.com/login.html> and press enter.

This will take you to our login page for end-customers (seen below in Figure 1: login page for m.ginlong.com).

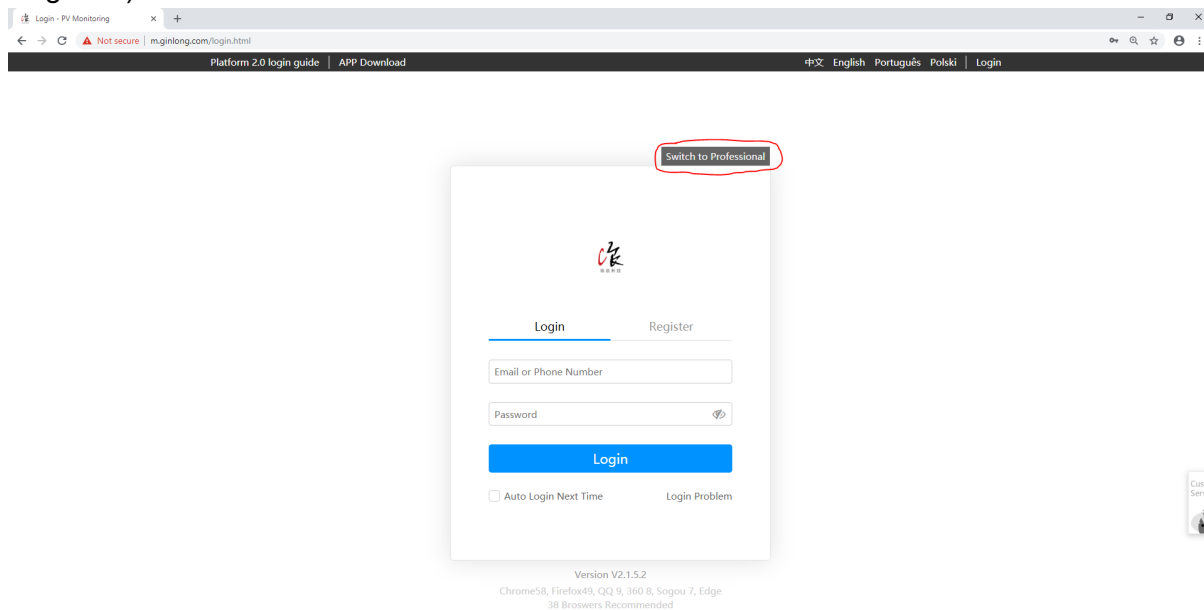


Figure 1: login page for m.ginlong.com

To move to our installer login page, press “Switch to Professional”

Then click on the “Free Application” button (seen below in Figure 2: Installer login page) on the top right to take you to our installer registration page.

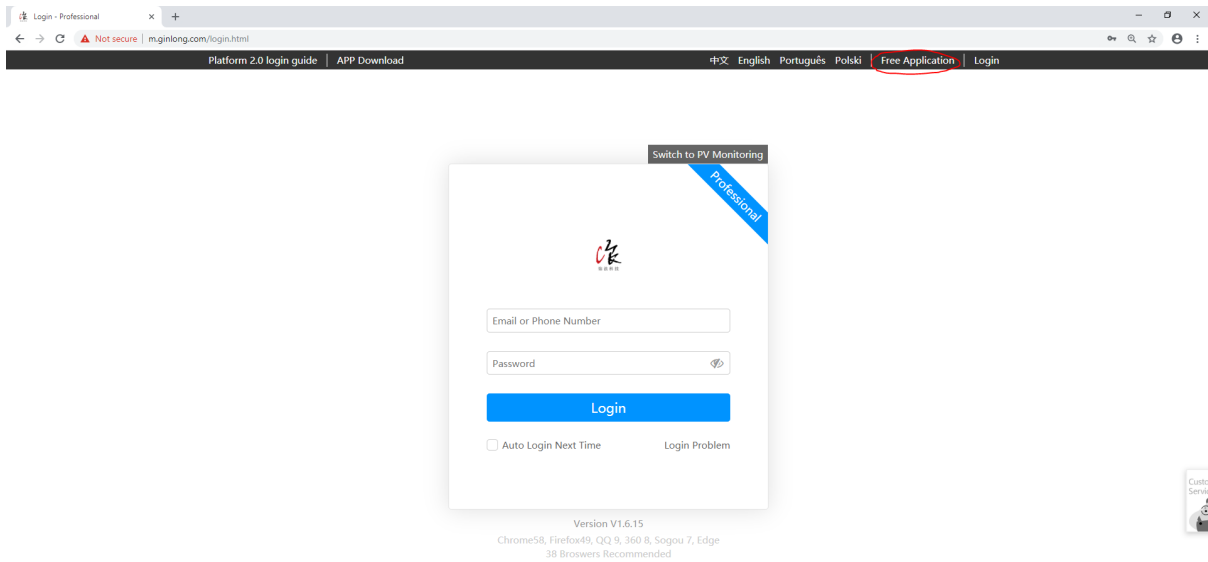


Figure 2: Installer login page

Follow the registration steps and click complete, the account will be verified within 3 business days.

3. Using the installer account

The following will guide the reader through the process of plant (an end-customer PV site or installation) setup and the process of associating (linking or assigning) end-customers to see their relevant plants.

3.1. Logging in

We have two different applications for this monitoring platform: Ginlong Home, for end users; and Ginlong Pro, for installers and distributors. They work on both android and iOS platforms and can be downloaded at GooglePlay (https://play.google.com/store/apps/developer?id=Ginlong&hl=en_GB) and the other place no one really wants to use.

3.2. Creating a plant

The first thing you need to do to get started is create a plant. This is done by hovering your mouse over the “Plant Centre” button and then clicking on “Create new Plant” (as shown below in Figure 3: Create new plant).

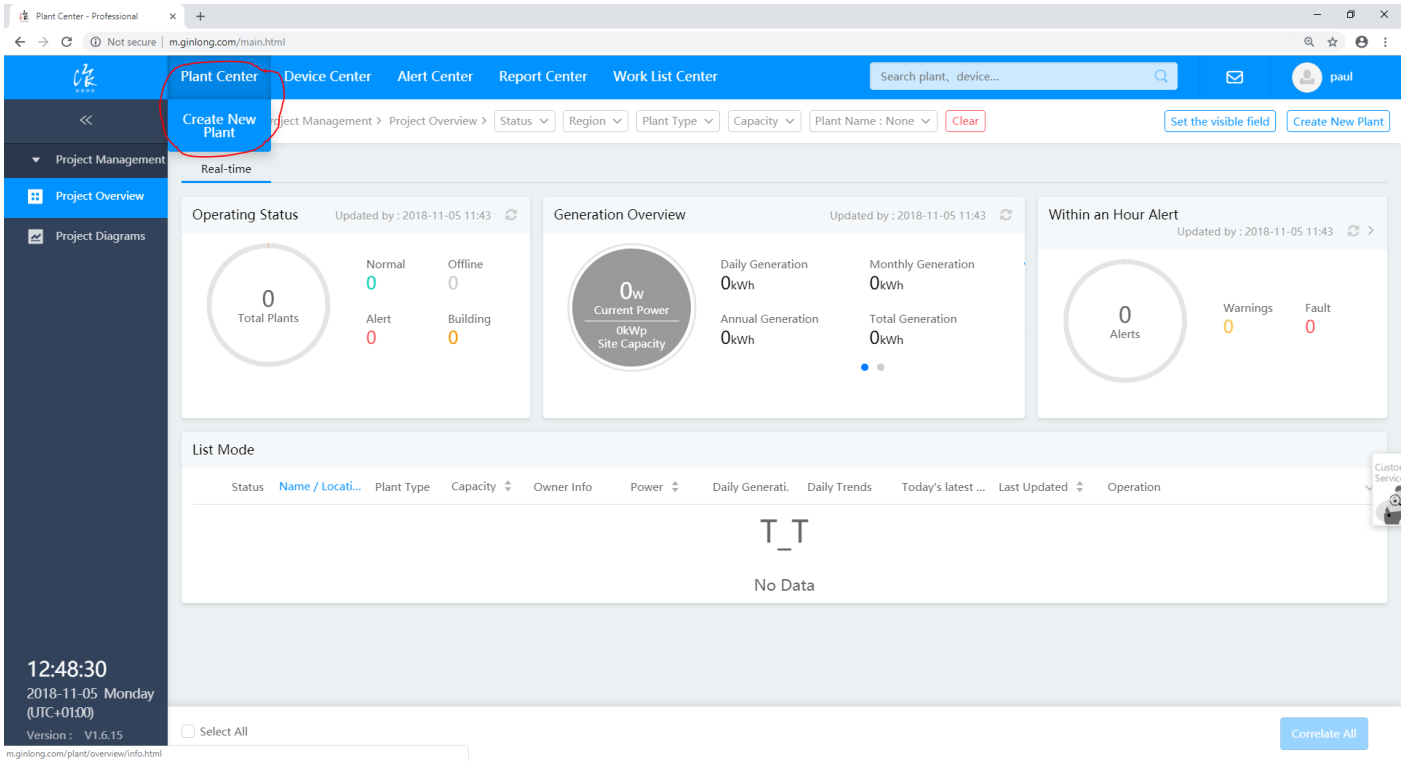


Figure 3: Create new plant

Complete the form with the relevant details of the plant then click Next. Where it asks you “Grid-connected Type” for PV inverters select “Distributed All Power on Grid” and for Hybrid inverters select “Storage System” (seen below in Figure 4: Grid-connected Type).

Plant Name

Plant Type Residential Roof Commercial Roof Industrial Roof
 Surface Power Station

Grid-connected Type Distributed All Power on Grid Partly On-grid
 Off-grid Storage System Full ground Internet

Figure 4: Grid-connected Type

3.3. Associate end-customer to the plant

At this point we are given the opportunity to add Associations (end-customers that will be able to see the plant). You have the following options in doing so.

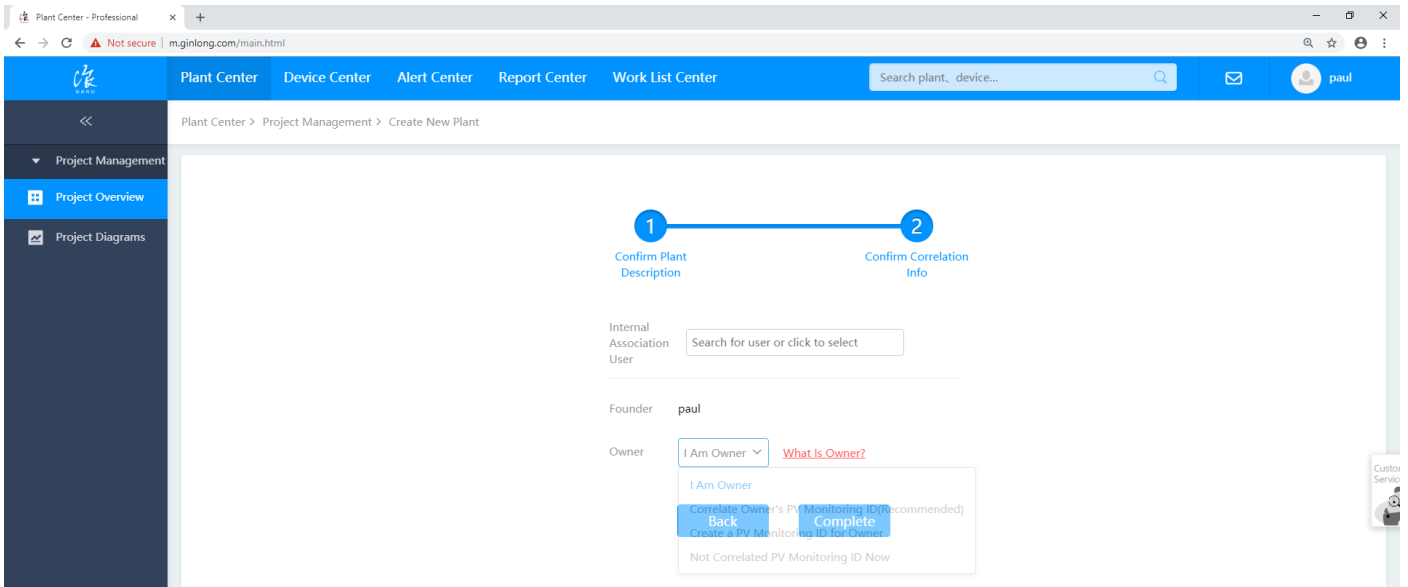


Figure 5: Owner dropdown bar

Option 1: the simplest

The easiest way to do this is to choose the “Create a PV Monitoring ID for Owner” option by hovering your mouse over the Owner drop down bar (as seen above in Figure 5: Owner dropdown bar). This creates an end-user account for the customer with their email address and a default password of “123456”. *This is a basic password and the account will have no control over the plant so it is safe to have such an insecure password, however the installer account password should be secure.*

Option 2: don't have customer details

If you do not want to associate the end-customer at this stage just select “I am Owner” and you will be the only one that will be able to see this plant, until you add an end-customer. You can add an end-customer at a later by clicking on the “Association Relations” button (shown below in Figure 6: Association Relations button) on the plant overview screen (accessed by clicking “Plant Center” on the top left).

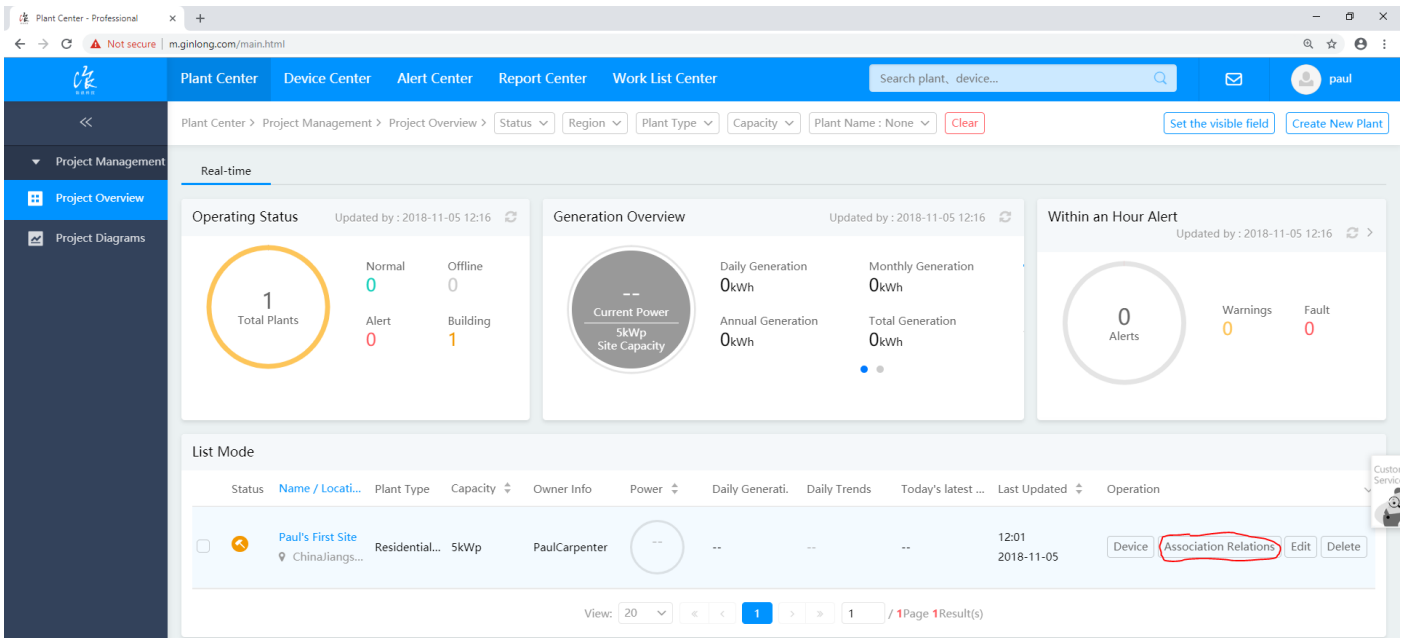


Figure 6: Association Relations button

Option 3: end-customer already made an account

If the end-customer already has an account (they have multiple plants for example) you can select “Correlate Owner’s PV Monitoring ID (recommended)” and put in their ID to associate them to the plant. The end-customer can find their ID by logging into their account and looking at the top left (seen below in Figure 7: Finding PV-owner's ID).

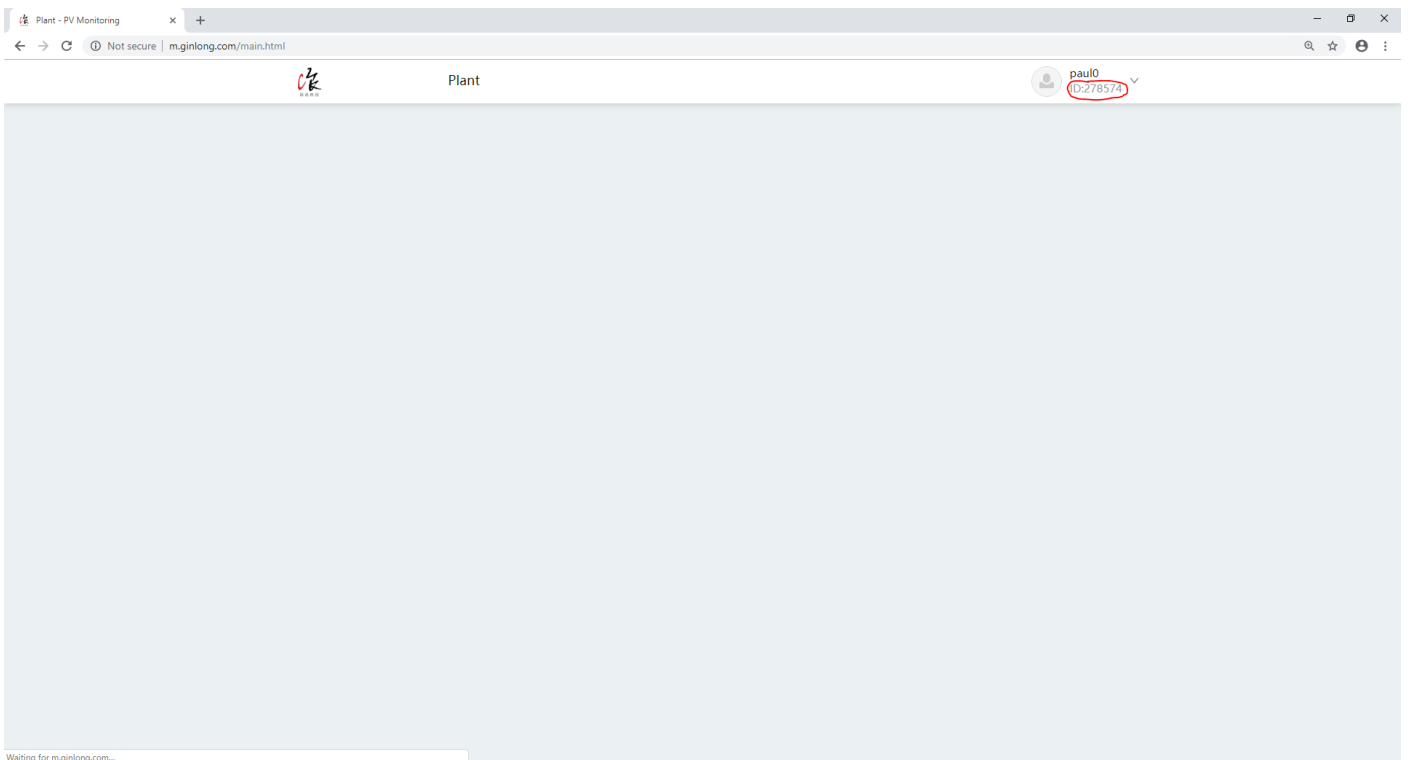


Figure 7: Finding PV-owner's ID

3.4. Adding device to the plant

You are also given the opportunity to add devices upon creation of the plant, however again you are not restricted to doing so (as shown below in Figure 8: add device now).

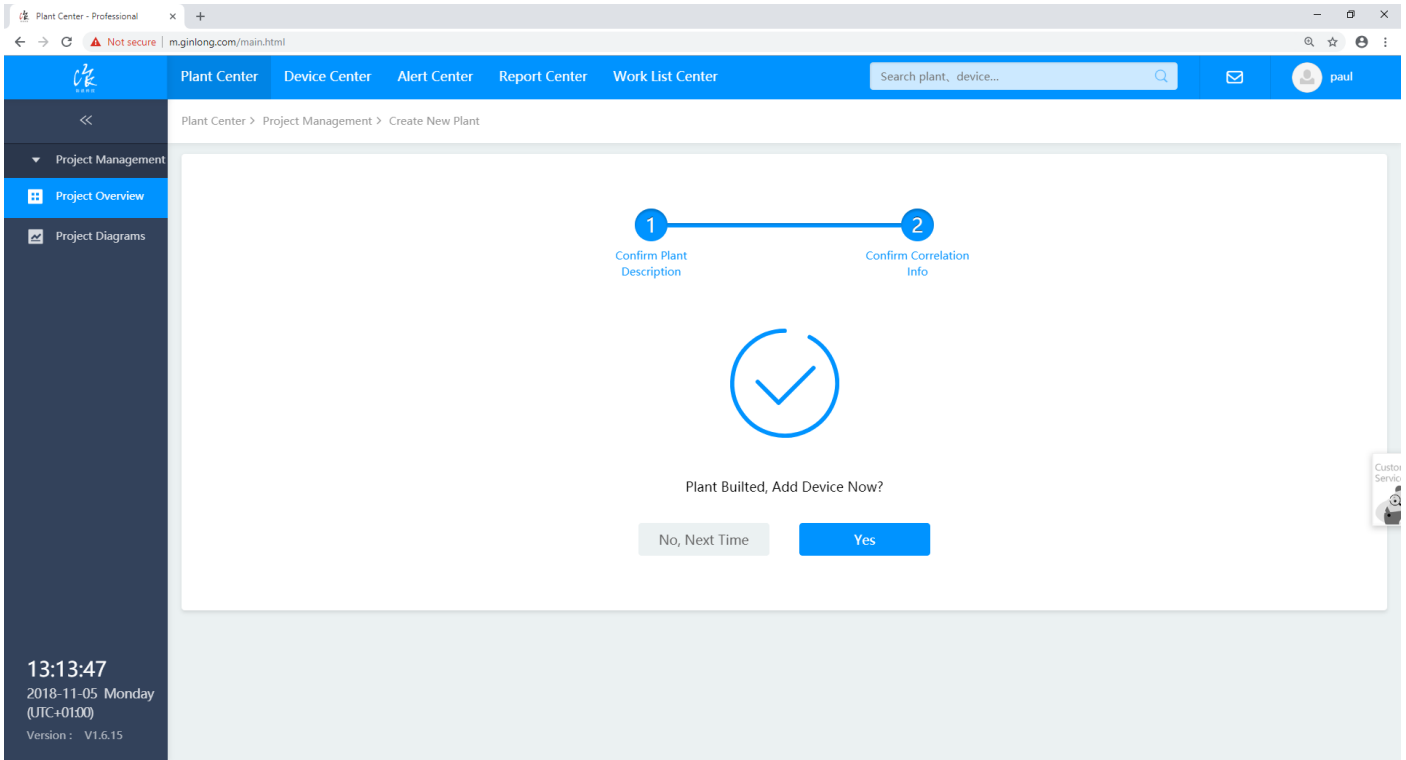


Figure 8: add device now

Adding a device is as simple as getting the serial number of the datalogger (**not the inverter**) and putting in the relevant box (as shown below in Figure 9: adding a device). You can add multiple dataloggers (inverters) to a single plant.

If you get the warning message “The SN number has already been registered to other plants”, this means exactly what it is telling you. Someone has already assigned this datalogger to their plant. In the case that this is in fact your serial number and do not know why you are getting this message, email your local support team to sort it out.

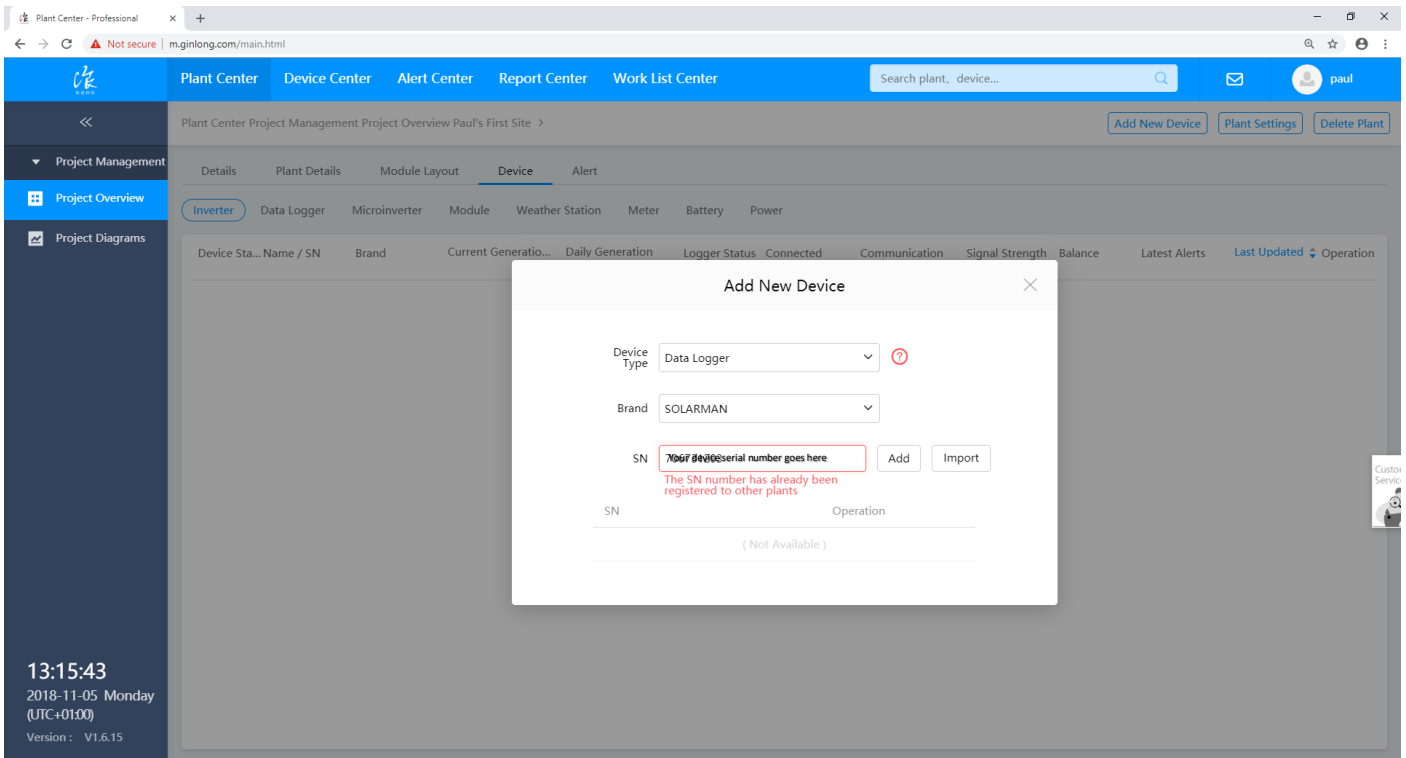


Figure 9: adding a device

3.5. Testing the system

If the datalogger has an internet connection and you have added it correctly you should be able to see the data being sent to the plant, you have just created.

It is also a good idea to login with the PV Owner’s account and check if they can see the plant too.

3.6. Editing the plants

If you log back into your installer account on the “Professional” login page, you will now see all the plants you have ever created (seen below in Figure 10: Multiple plants on installer account).

To add a new datalogger simply click the “Device” button and on the top right of the page click the “Add new Device” button.

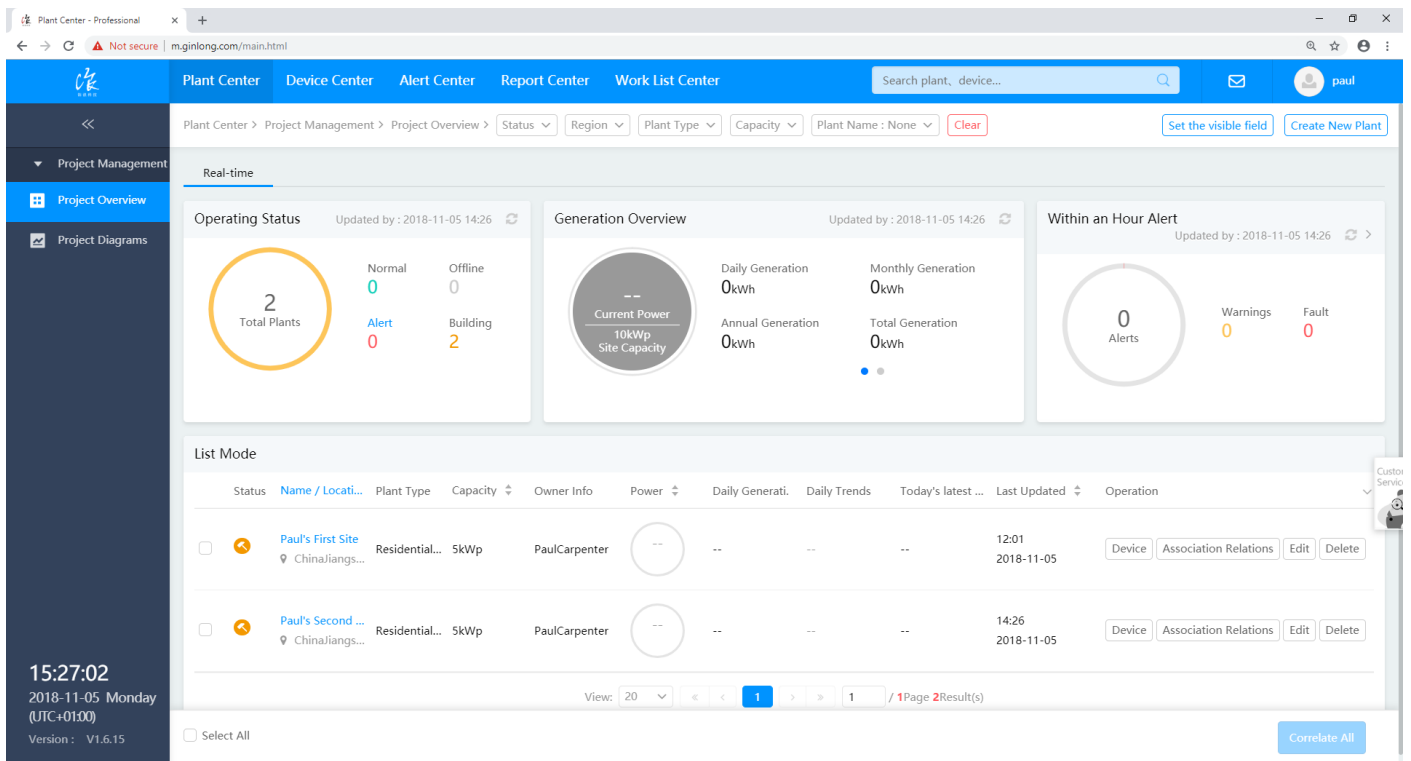


Figure 10: Multiple plants on installer account

3.7. Monitoring the plants

When you are in “Plant Center” you can see the total energy for all your plants and if you click on an individual plant you will see the data only for that plant (as seen below in Figure 11: Plant overview).

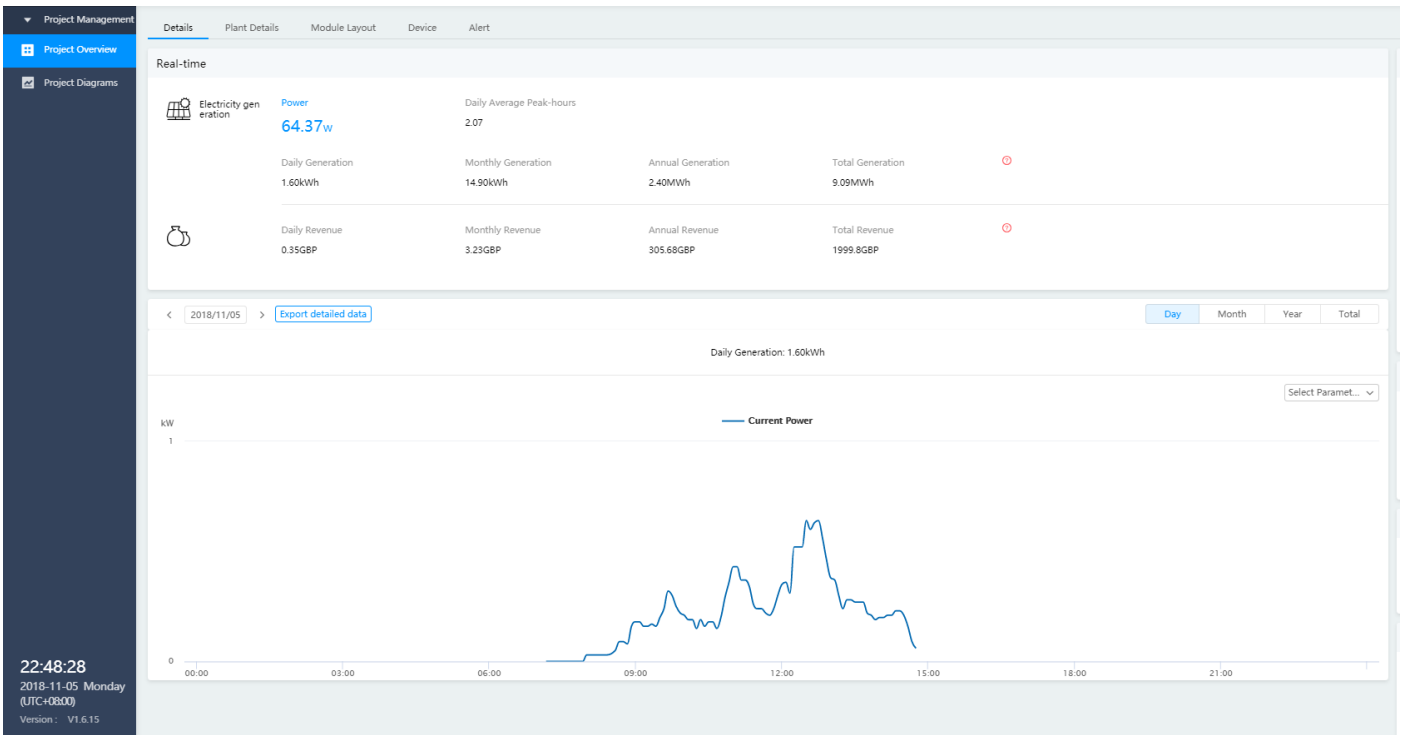


Figure 11: Plant overview

If you click on the left side of the screen “Project Diagrams” it is a perfect local display screen (as seen below in). You can also change the graph to display the data in day/month/year.

If you click on the “Device” button you can see data in more depth (shown below in Figure 12: Traces for multiple parameters). You can click on the “Select Parameter” dropdown box to select what parameters you want to see. This is extremely useful for troubleshooting inverters.

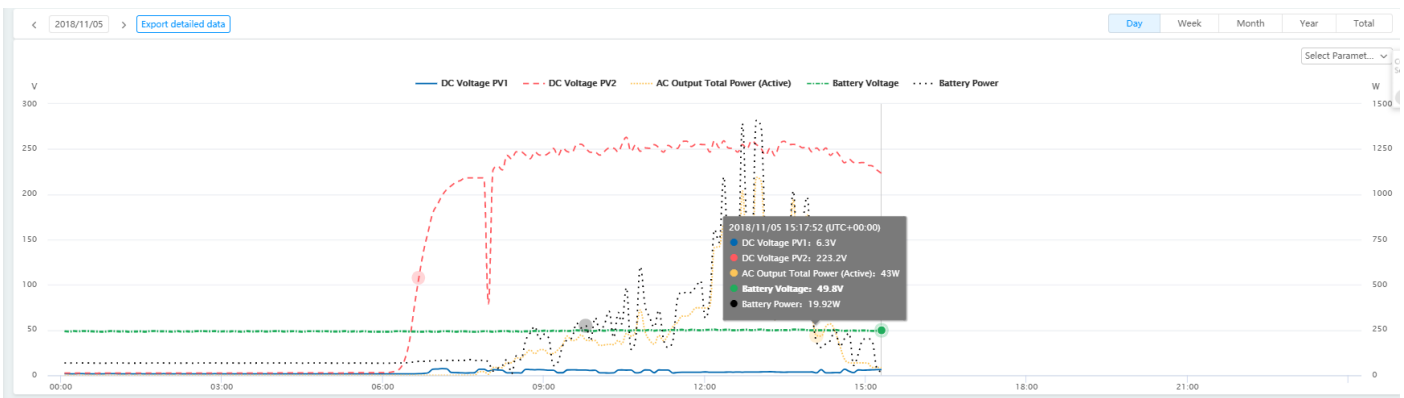


Figure 12: Traces for multiple parameters