

Hi-MO X6^{Max} Scientist

LR7-60HTH 520~525M

- Suitable for Distribution Market
- Simple design embodies modern style
- Better energy generation performance
- High-quality module guarantees long-term reliability



25-year Warranty for
Materials and Processing



25-year Warranty for Extra
Linear Power Output

Complete System and Product Certifications

IEC 61215, IEC 61730

ISO9001:2015: ISO Quality Management System

ISO14001: 2015: ISO Environment Management System

ISO45001: 2018: Occupational Health and Safety

IEC62941: Guideline for module design qualification and type approval

LONGi



CE

23.3%

MAX MODULE
EFFICIENCY

0~3%

POWER
TOLERANCE

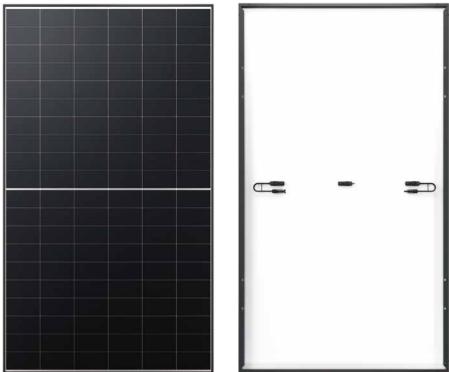
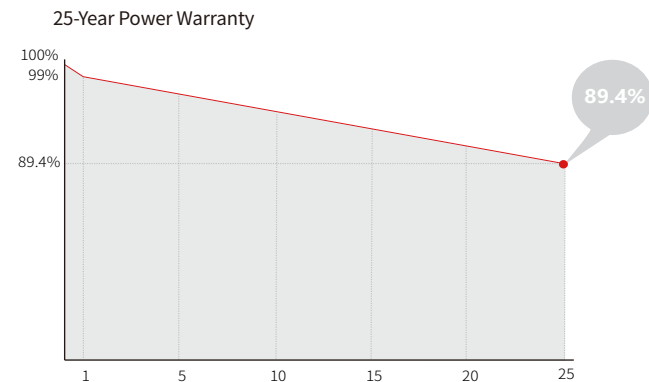
<1%

FIRST YEAR
POWER DEGRADATION

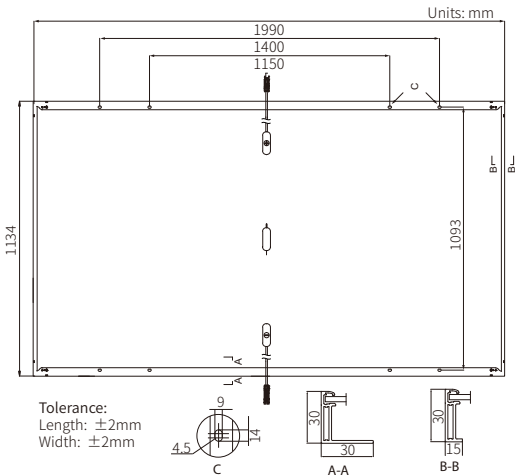
0.40%

YEAR 2-25
POWER DEGRADATION

Additional Value



Mechanical Parameters	
Cell Orientation	120 (6×20)
Junction Box	IP68
Output Cable	4mm², ±1400mm length can be customized
Glass	Single glass, 3.2mm coated tempered glass
Frame	Anodized aluminum alloy frame
Weight	24.8kg
Dimension	1990×1134×30mm
Packaging	36pcs per pallet / 180pcs per 20' GP / 792pcs per 40' HC



Electrical Characteristics	STC : AM1.5 1000W/m² 25°C		NOCT : AM1.5 800W/m² 20°C 1m/s		Test uncertainty for Pmax: ±3%
	LR7-60HTH-520M	LR7-60HTH-525M	LR7-60HTH-520M	LR7-60HTH-525M	
Module Type	LR7-60HTH-520M	LR7-60HTH-525M			
Testing Condition	STC	NOCT	STC	NOCT	
Maximum Power (Pmax/W)	520	388.7	525	392.4	
Open Circuit Voltage (Voc/V)	44.10	41.41	44.30	41.59	
Short Circuit Current (Isc/A)	14.95	12.07	15.01	12.11	
Voltage at Maximum Power (Vmp/V)	37.24	33.99	37.44	34.17	
Current at Maximum Power (Imp/A)	13.97	11.45	14.03	11.48	
Module Efficiency(%)	23.0%		23.3%		

Operating Parameters	
Operational Temperature	-40°C ~ +85°C
Power Output Tolerance	0 ~ 3%
Maximum System Voltage	DC1500V (IEC)
Maximum Series Fuse Rating	25A
Nominal Operating Cell Temperature	45±2°C
Protection Class	Class II
Fire Rating	IEC Class C

Mechanical Loading	
Front Side Maximum Static Loading	5400Pa
Rear Side Maximum Static Loading	2400Pa
Hailstone Test	25mm Hailstone at the speed of 23m/s

Temperature Ratings (STC)	
Temperature Coefficient of Isc	+0.050%/°C
Temperature Coefficient of Voc	-0.230%/°C
Temperature Coefficient of Pmax	-0.280%/°C