

Racking company: ESDEC (an Enstall company) **Version:** A1 **Date:** 2024/1/4

Canadian Solar and Esdec hereby confirm that the mounting parts and module types mentioned in the following table are fully compatible. This letter is valid for one year following the date it was issued and may be renewed at expiration after evaluation of the information available at that time or when superceded by more recent Compatibility Approval Letter.

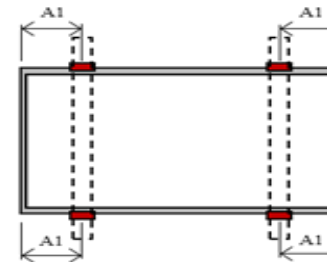
Module type	Datasheet version	Module dimensions LxWxH mm	Mounting Range	Max test load (Pa)	Module Frame Information		
				ClickFitEvo 4-point mounting	Alloy	Cross Section BxC (mm)	Anodization coating thickness (um)
CS6R-xxx-T	TOPHiKu6-TOPCon_CS6R-T_v1.8_EN TOPConAll-Black_CS6R-T_v1.1_EN	1722x1134x30	A1:300-400	+5400/-2400	6005-T5	30x30	15 (Black)/10 (Silver)
			A1: 200-500	+3600/-2400	6005-T5	30x30	15 (Black)/10 (Silver)
			A1: 100-600	+2400/-2400	6005-T5	30x30	15 (Black)/10 (Silver)
CS6W-xxx-T/ CS6W-xxx-MS	TOPHiKu6-TOPCon_CS6W-T_v1.8_EN HiKu6_CS6W-MS_v2.8_EN-2278mm-1	2278x1134x30	A1:450-550	+5400/-2400	6005-T5	30x35	10(Silver)
			A1: 300-600	+2400/-2400	6005-T5	30x35	10(Silver)

Note:

For installations complying with IEC 61215-2:2016 and UL 61730, a safety factor of 1.5 should be applied for calculating the equivalent maximum authorized design loads. Please refer to our PV Module Installation Manual for the details on how to install PV modules. CSI Solar warranty may be void if clamps, bolts, washers or unsuitable installation methods are not found in-line with the installation manual. When installing PV modules, take steps to:
All mounting designs must be certified by a registered professional engineer. The mounting design and procedures must comply with local electrical and building codes and must always take module specifications into consideration. The PV system designers and installers are solely responsible for load calculations and the proper design of the supporting structure.

Installation Manuals:

- Manual_ClickFitEvo_StandingSeamRoof_EN_307.pdf
- Esdec Racking Profile 12-15-21.pdf
- Brochure_ClickFitEvo_TiledRoof_TrussHook_EN_312.pdf
- 1008020-B_CF EVO accessory_Module clamp Universal (ver.2.0).pdf
- CSI_Installation-Manual_PV-Modules_EN-v1.8-EN.pdf



Yuanjie Yu
Sr. Manager
System Performance
CSI Solar Co., Ltd
Email: yuanjie.yu@csisolar.com

(Signature)



Yann Schwarz
Vice President, Systems Engineering & Compliance
Engineering
Enstall
Email: yann.schwarz@enstall.com

(Signature)

