



Application Note - Updating firmware on Pylontech batteries



Updating firmware on Pylontech batteries

The following is required to successfully update the battery firmware:

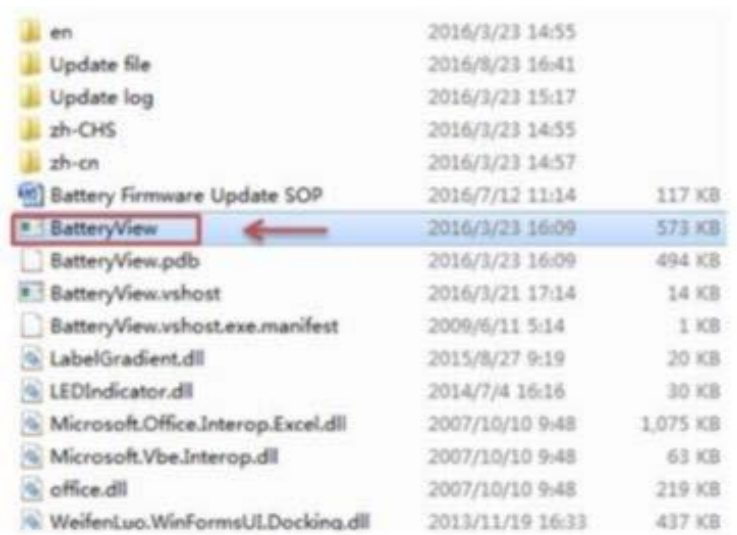
- New BatteryView for Pylontech battery. Can be found [here](#).
- Firmware for battery. Can be found [here](#).
- RS232 to USB cable Kit. Can be purchased [here](#).
 - » For US2000/US3000/Phantom-S/UP2500, the RS232 cable type is RJ11 – DB9 – USB
 - » For Force L1/L2, the RS232 cable type is RJ45 – DB9 – USB

Once you have all the components listed above, the following steps will guide you on how to upgrade firmware on your battery.

1. Using the RS232 to USB cable kit, plug the USB side into your laptop or computer and the RJ45/RJ11 side into the “console” port on the battery (indicated in blue below). Switch on the battery using the power switch.



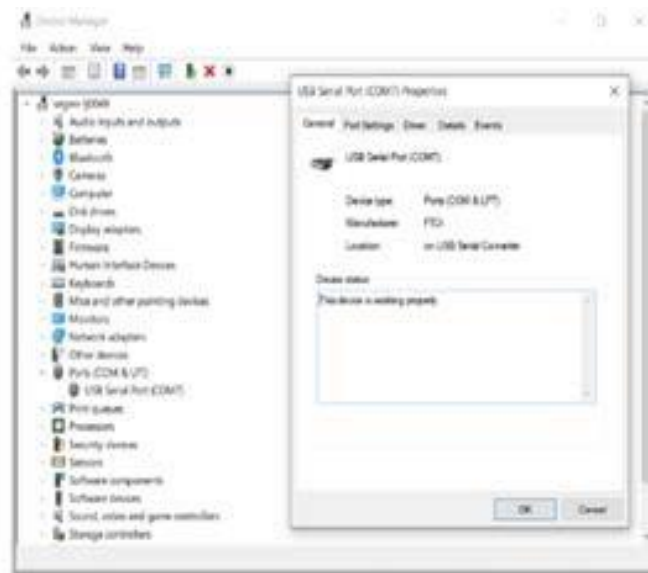
2. Open the BatteryView program. Do not unzip the program from the .zip folder. Click on BatteryView to open the program.



A pop-up window like the one below should display on your computer's screen. Select 'Connect'.



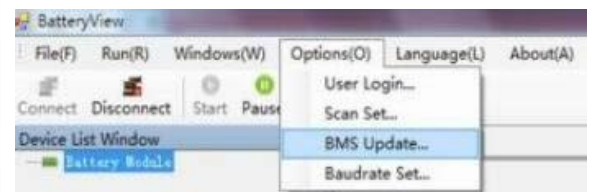
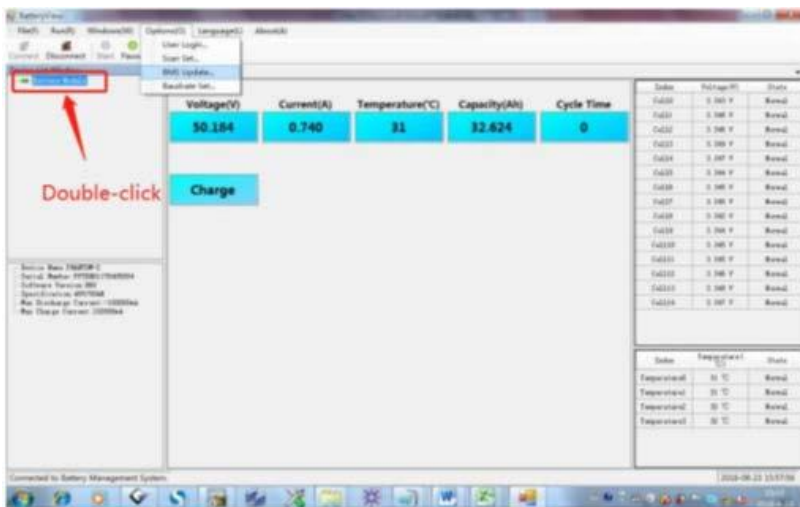
3. Ensure that the cable is detected by your laptop. This can be verified by going to the following location on your laptop: Control panel > Device manager > and expand the Ports (COM & LPT). It should look like below. Please note that your device might have a different COM number, it will be COMX (Where X is the number).



4. Back to the BatteryView application opened. The Port Name will be automatically recognized once the RS232 cable is well installed or from the Device Manager; The Baudrate is 115200



- If the BatteryView shows values, it means the connection is successful. Please double-click the 'Battery Module' tool bar to receive correct battery information on the bottom right side, then take a Screenshot as evidence for further maintenance task. Please choose the "BMS Update".



- Click Browse to choose the firmware.

- For upgrade US2000B/US3000A/Force-L series product:

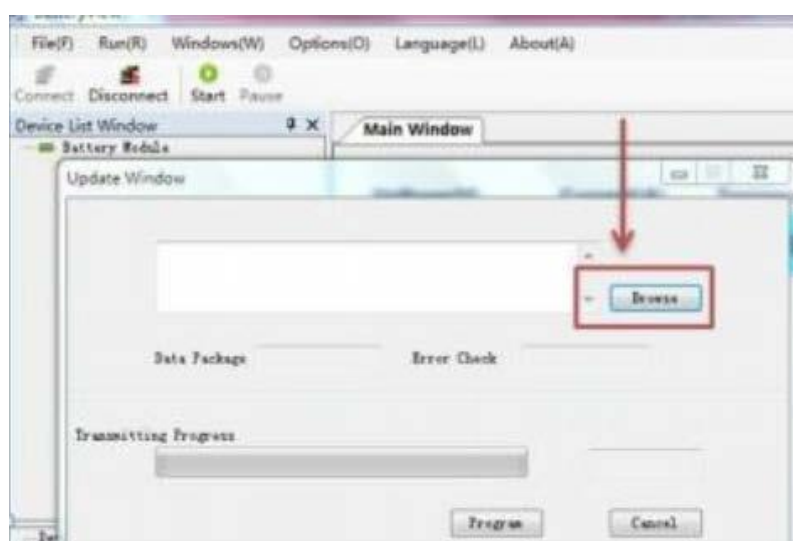
Please select the correct .bin file for the upgrade, by any version of Batteryview.

- For upgrade US2000C/US3000C/UP5000:

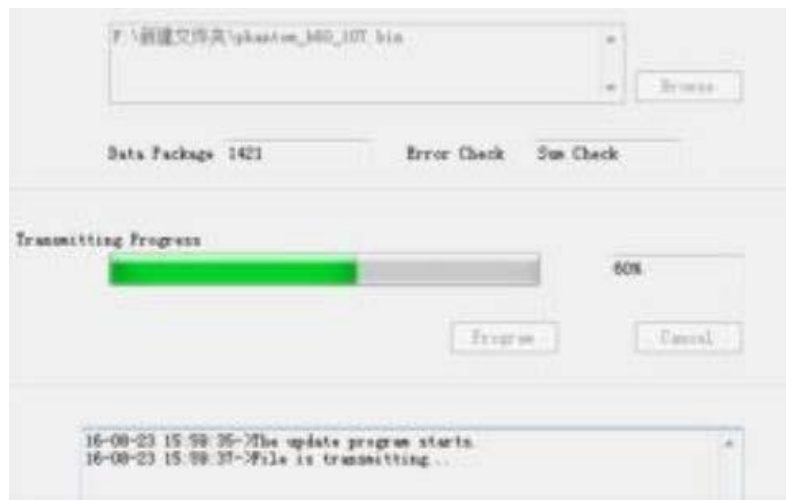
If the 8th and 9th of the product Serial Number is not 'E2' or 'C3', it can still select the correct .bin file for the upgrade, by any version of Batteryview.

If the 8th and 9th of the product Serial Number is 'E2' or 'C3', please select the correct .zip file for the upgrade and require using Batteryview V3.0.28 or higher.

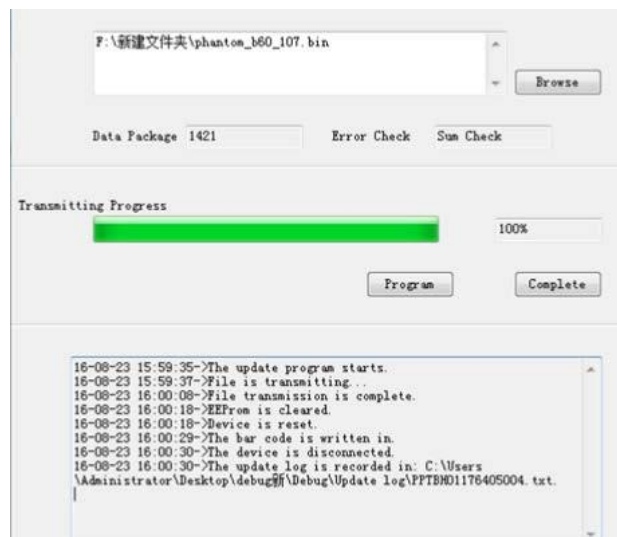
*It's suggested to always use the .zip file and Batteryview V3.0.28 for any US2000C/US3000C/UP5000 upgrade to avoid wrong upgrade caused PCBA damage.



7. Click "Program" to start.



8. When it shows the Serial Number, it means the update has finished. Please keep watching the progress bar and 'Program' button till 100%. In different Operation System, it may happen that the upgrade stick during the process and require to click the 'Program' again (once the 'Program' button becomes highlighting again during the upgrade process).



Click "Complete" and the program will return to the main page:

