

Solar on tiles made easy



ERIC-TILE allows for simple solar panel installations. No cutting. No sealants. No leaks.



Manufactured using high quality materials, with the polypropylene plate's working temperature of $-40\text{ }^{\circ}\text{C}$ to $120\text{ }^{\circ}\text{C}$.



With no need to cut any tiles, health and safety risks are reduced.



Cost saving due to reduced installation times with no need to purchase spare tiles.



Convenient cable entry points allow for easier solar panel installations.



No need to use mastics or sealants to provide weather proofing.



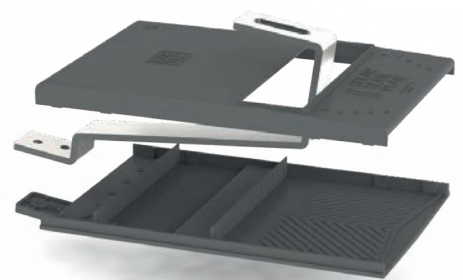
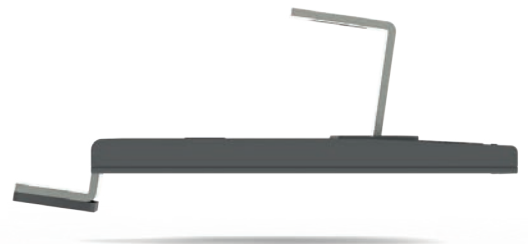
Choice of 2 universal roof hooks for different rail types, meaning the right tool will be available for the job at hand.



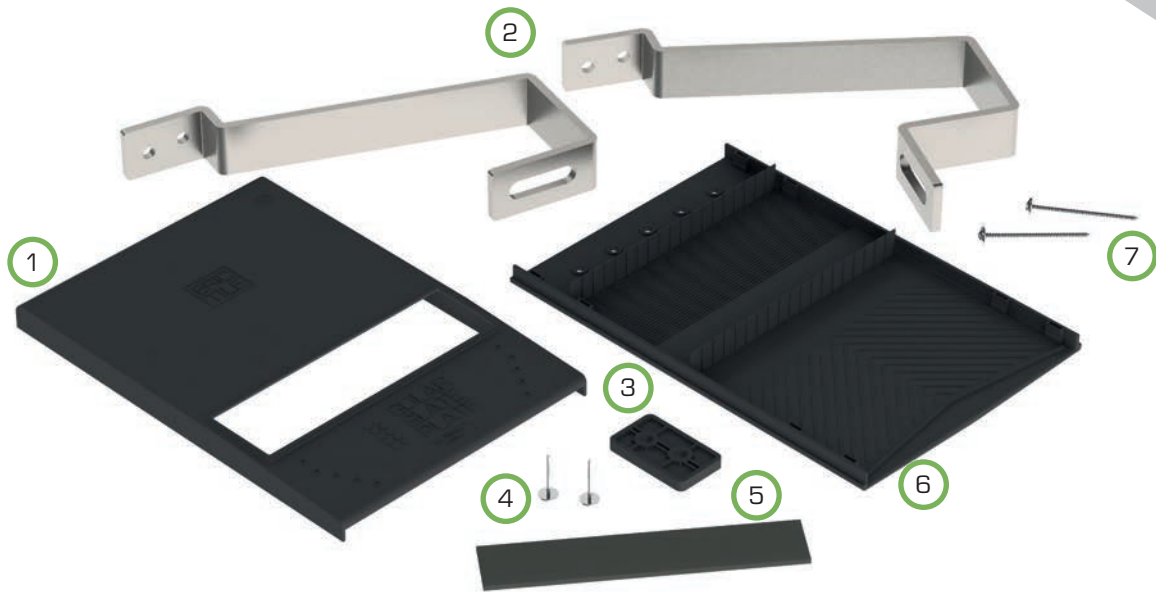
Stand on the mounting rail without breaking the tiles underneath.



Includes full 10 year product guarantee.

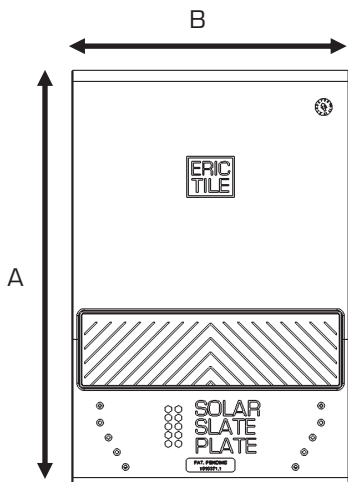


“Solar Slate Plate don't just think outside the box, we think inside as well!”

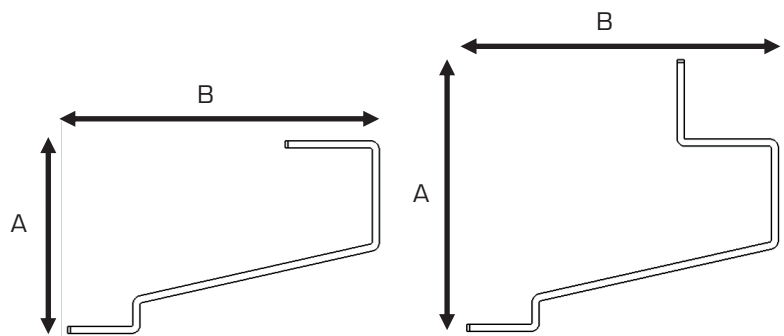


- 1 **ERIC-TILE (Top)**
UV-Stabilised Polypropylene
- 2 **C / L Roof Hook**
304 Stainless Steel
- 3 **Packer**
UV-Stabilised Polypropylene
- 4 **Clout Nail / Screw**

- 5 **Rubber Strip**
EPDM
- 6 **ERIC-TILE (Bottom)**
UV-Stabilised Polypropylene
- 7 **80 mm M6 Screws**
A2-70 Stainless Steel



Sizes Available		
A	x	B
243 mm	x	163 mm



Sizes Available			
	A	x	B
C Hook	133 mm	x	215 mm
L Hook	188 mm	x	215 mm



Solar on tiles made easy