

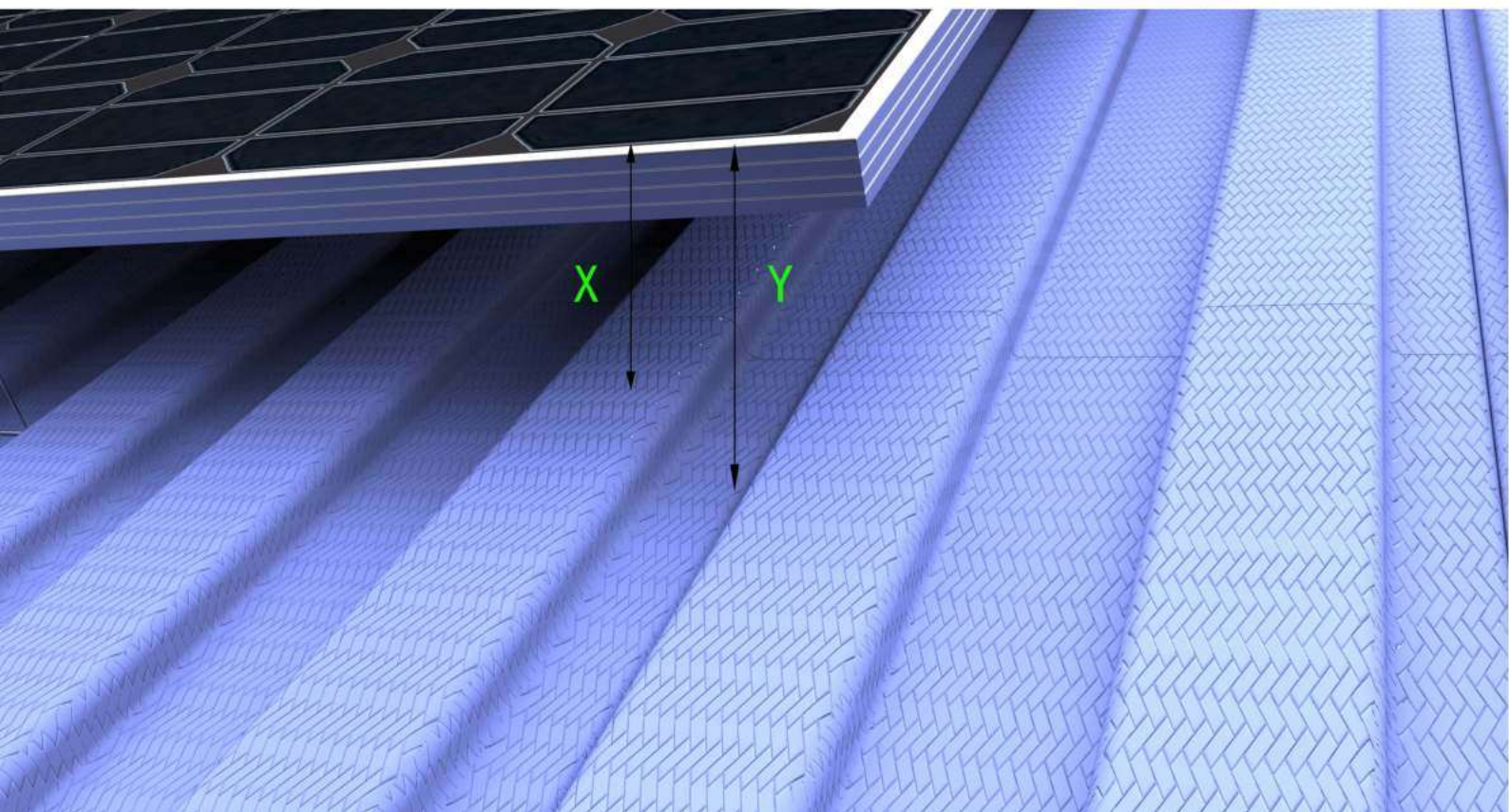
Solar Spikes

Installation Manual

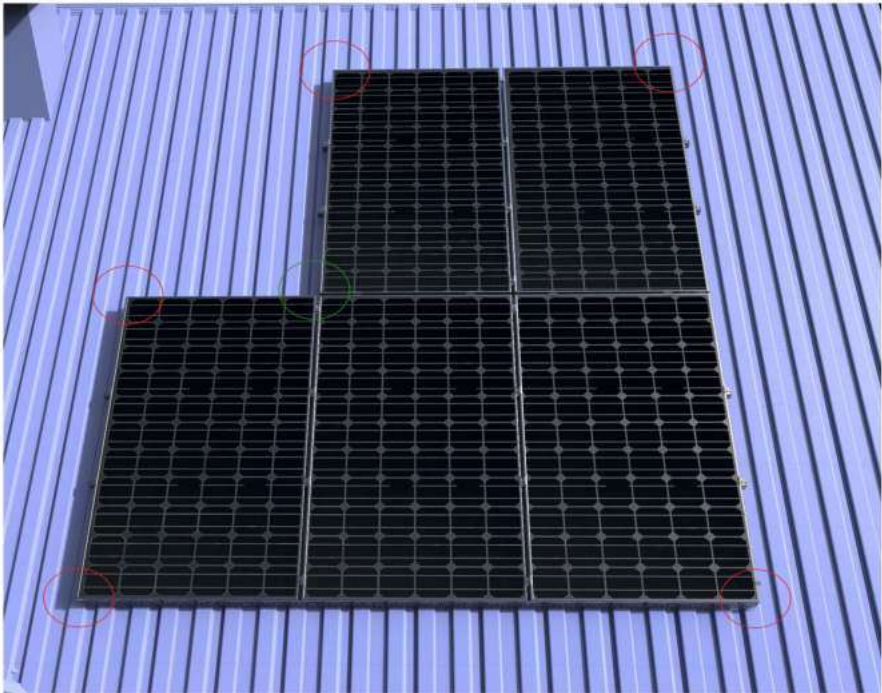
The users are responsible for the correct installation of solar spikes. Always follow the applicable safety regulations and use the correct safety equipments during installation on the roof.



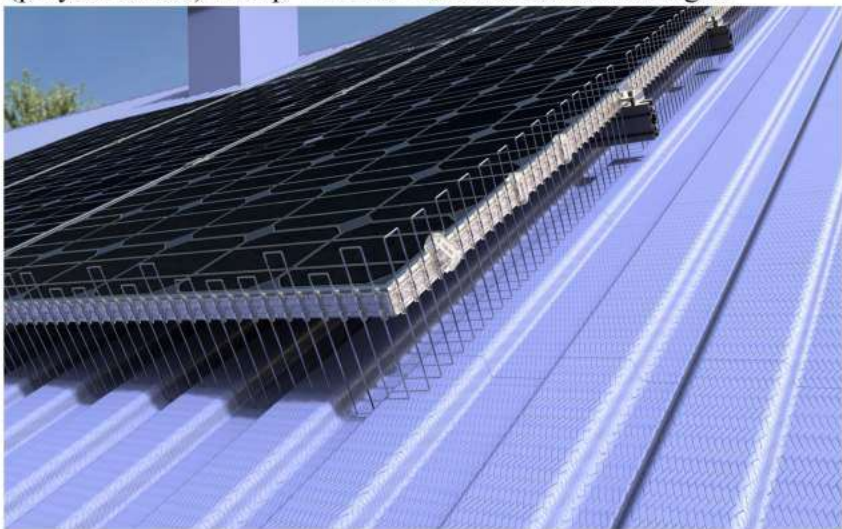
1. Please measure the distance (X and Y) from the roof surface to the mounting profile. The distance from the edge of the panel to the roof surface will determine which model of solar spikes can be installed better.



2. Please check the numbers of outer corners and inner corners of your solar panel. Calculate the estimated perimeter of solar panel frame edge.



3. Please choose one appropriate method to fix the solar spikes onto the edge of solar panel frame. There are four ways which the installers can use. Choose good quality silicone adhesive, special double -side tape or plastic (polycarbonate) clamp which is 30mm or 35mm in length.



Length
35mm



Length
30mm

4. Please adjust the pins until the pins reach to the roof surface. If there is a break in the solar panel profile. Please block it with small piece of solar spikes.

