



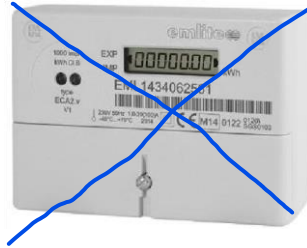
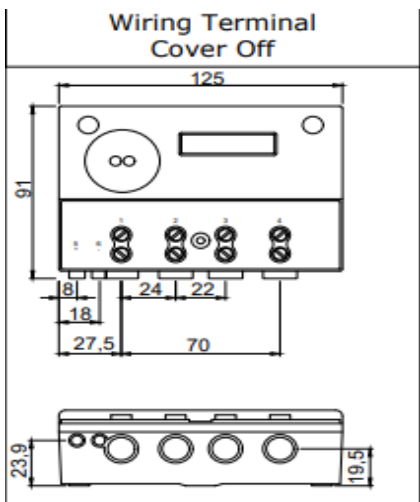
SmartMeters



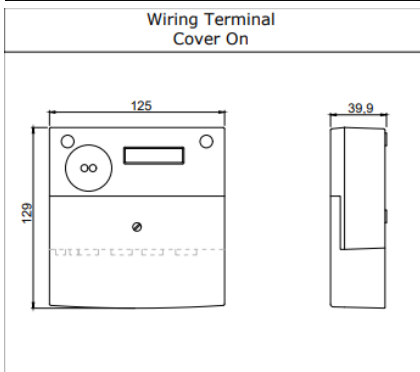
Emlite ECA2 - Summary Sheet

Fully approved in accordance with the Measuring Instruments Directive (MID), this highly accurate, wall mounted meter may be used for billing and monitoring consumption on a single phase supply.

Dimensions Specification



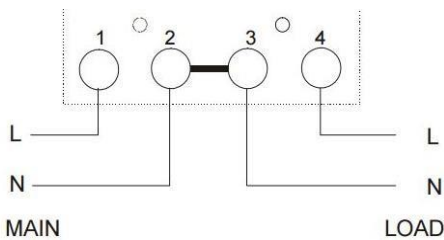
~~ECA2 c/w standard cover~~



ECA2 c/w extended cover

Part code	ECA2Z
Meter Type	Single Phase
Fitting Type	Wall Mounted
Max.Current (Amps)	100A
MID Approved	Yes
Smart	No
Input Type	Direct Connect
Output Type	Pulse (order code ECA2V)
Tariffs	Single
Import/Export	Import Only (export optional)
Net Reading	Optional**
Availability	Next Day

Wiring Guide



**The ECA2 Net meter has been specifically designed for use within a solar installation for the metering of generation and particularly with solar installations that also include co-location battery storage.