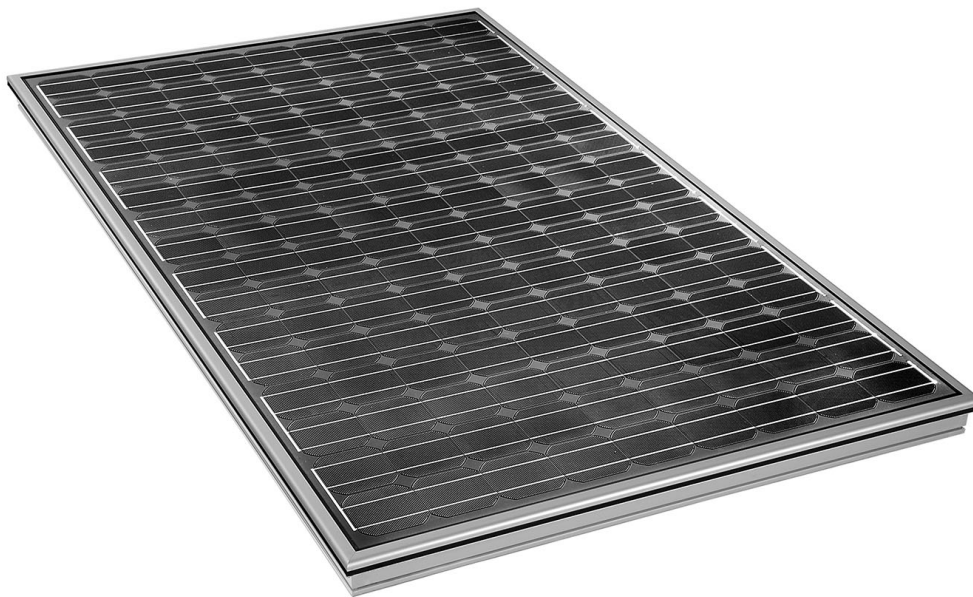


Premium line



**Article number:** 231 664  
**Description:** S 320 PM-2 Al<sub>7035</sub>

**Module**

Module type: Premium module  
Frame: Aluminium<sub>7035</sub>  
(7035 = RAL 7035; light grey)  
Lacquered aluminium  
Rear wall: Lacquered aluminium  
Size (W x H): 2152 x 1252 mm  
Frame height: 93 mm  
Height of connecting box: 15 mm  
Weight: 43 kg  
Configuration: 144 cells (16 x 9)  
Cell connection arrangement: 144 cells in series

**Cell**

Cell type: Monocrystalline  
Colour: Dark blue  
Size: 125 x 125 mm  
Horizontal gap between cells: 3.0 mm  
Vertical gap between cells: 3.0 mm  
Distance from edge horizontally: 32 mm  
Distance from edge vertically: 45 mm  
Strip conductors: Horizontal

**Input and output values** (STC: 1000 W/m<sup>2</sup>; 25°C; AM 1.5)

Nominal output: P<sub>MPP</sub> 320 Wp  
Output tolerance: -0/+5 %  
Nominal voltage: U<sub>MPP</sub> 72.3 V  
Nominal current: I<sub>MPP</sub> 4.43 A  
Open-circuit voltage: U<sub>oc</sub> 88.1 V  
Short-circuit current: I<sub>sc</sub> 4.75 A  
Max. system voltage (SKL II): U<sub>sys</sub> 1000 V

**Module design**

Front glass: 4 mm PLANIDUR Diamant  
Space between cells: EVA with solar cells  
Reverse: Tedlar bonding foil

**Connection**

Connecting box with bypass diodes.  
Fitted connecting cable 1.5 / 1.5 m with MC-T3 plug system.

**Packing unit** 1

**PV module: S 320 PM-2**

The **S 320 PM-2** is a versatile PV module with high power density. The system frame, derived from Schüco collector technology, offers the options of on-roof, in-roof or flat-roof installation. In addition, it can also be canopy mounted, integrated into a façade or integrated into a complete roof system. It can also be combined with Schüco collectors and window units of the same size, in every sort of combination. The frame can be anodised or colour coated in a range of RAL colours. The high performance monocrystalline solar cells measure 125 x 125 mm and are embedded using tried and tested laminated glass technology.

Design: The "Al<sub>7035</sub>" design has a coated aluminium rear panel so that when canopy mounted, the (visible) reverse side still has a quality appearance.

**Quality features, certificates**

- Performance guarantee: 25 years: 80% of P<sub>Min</sub>  
12 years: 90% of P<sub>Min</sub>
- Each module is subjected to a 100% final inspection, with individual detection of the electrical values.
- Glass Tedlar modules in Schüco system frame
- Connecting box with bypass diodes
- Fitted connecting cables with MC-T3 connectors
- Monocrystalline silicon cells
- Frame available in aluminium oxidised shades or in RAL colours.
- DIN VDE protection class II
- DIN EN 61 215 (IEC 61 215)
- Individual detection of electrical values.
- Installation using the same systems as for collector technology.