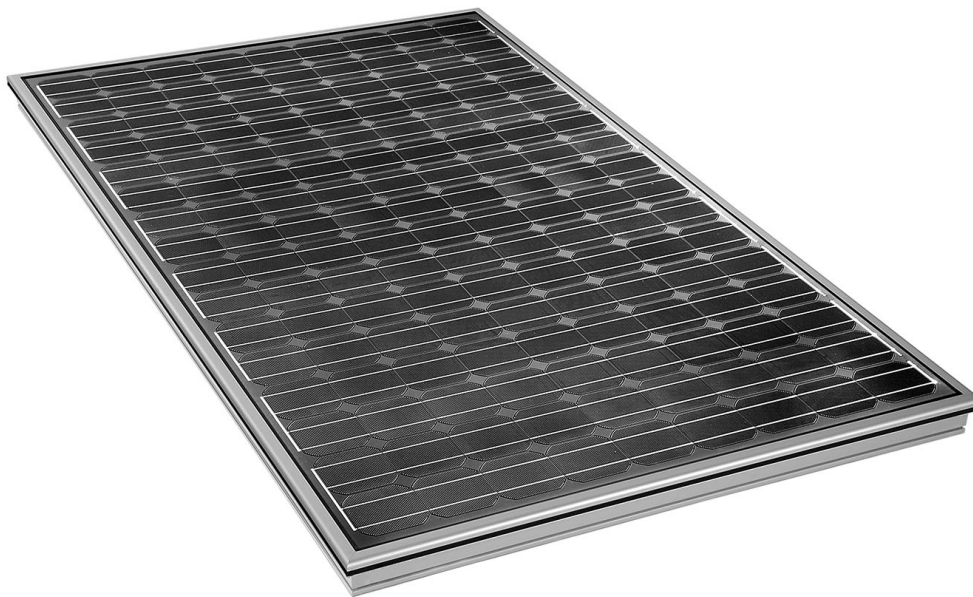


Premium line



Article number: 231 658
Description: S 330 PM-2 Al₇₀₃₅

Module

Module type: Premium module
Frame: Aluminium₇₀₃₅
(7035 = RAL 7035; light grey)
Lacquered aluminium
Rear wall: Lacquered aluminium
Size (W x H): 2152 x 1252 mm
Frame height: 93 mm
Height of connecting box: 15 mm
Weight: 43 kg
Configuration: 144 cells (16 x 9)
Cell connection arrangement: 144 cells in series

Cell

Cell type: Monocrystalline
Colour: Dark blue
Size: 125 x 125 mm
Horizontal gap between cells: 3.0 mm
Vertical gap between cells: 3.0 mm
Distance from edge horizontally: 32 mm
Distance from edge vertically: 45 mm
Strip conductors: Horizontal

Input and output values (STC: 1000 W/m²; 25°C; AM 1.5)

Nominal output: P_{MPP} 330 Wp
Output tolerance: -0/+5 %
Nominal voltage: U_{MPP} 73.4 V
Nominal current: I_{MPP} 4.5 A
Open-circuit voltage: U_{oc} 88.6 V
Short-circuit current: I_{sc} 4.81 A
Max. system voltage (SKL II): U_{sys} 1000 V

Module design

Front glass: 4 mm PLANIDUR Diamant
Space between cells: EVA with solar cells
Reverse: Tedlar bonding foil

Connection

Connecting box with bypass diodes.
Fitted connecting cable 1.5 / 1.5 m with MC-T3 plug system.

Packing unit 1

PV module: S 330 PM-2

The **S 330 PM-2** is a versatile PV module with high power density. The system frame, derived from Schüco collector technology, offers the options of on-roof, in-roof or flat-roof installation. In addition, it can also be canopy mounted, integrated into a façade or integrated into a complete roof system. It can also be combined with Schüco collectors and window units of the same size, in every sort of combination. The frame can be anodised or colour coated in a range of RAL colours. The high performance monocrystalline solar cells measure 125 x 125 mm and are embedded using tried and tested laminated glass technology.

Design: The "Al₇₀₃₅" design has a coated aluminium rear panel so that when canopy mounted, the (visible) reverse side still has a quality appearance.

Quality features, certificates

- Performance guarantee: 25 years: 80% of P_{Min}
12 years: 90% of P_{Min}
- Each module is subjected to a 100% final inspection, with individual detection of the electrical values.
- Glass Tedlar modules in Schüco system frame
- Connecting box with bypass diodes
- Fitted connecting cables with MC-T3 connectors
- Monocrystalline silicon cells
- Frame available in aluminium oxidised shades or in RAL colours.
- DIN VDE protection class II
- DIN EN 61 215 (IEC 61 215)
- Individual detection of electrical values.
- Installation using the same systems as for collector technology.