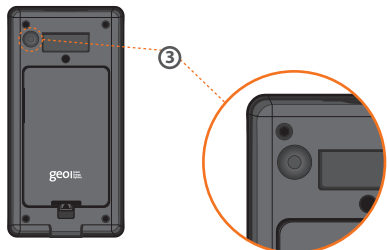


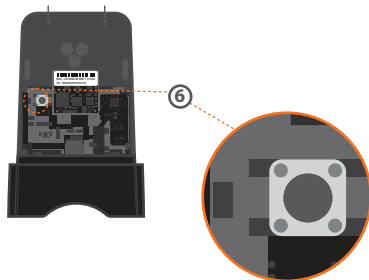
## Troubleshooting

- **Is the ⚡ on, but the Display is showing 0000?**  
Please refer back to Step 3 – LED Reader and Transmitter, checking with a light source that the connection between the LED Reader and Display is ok.
- **Is the ⚡ flashing?**  
This means that the Transmitter is out of range. Please move the Display closer to the Transmitter.
- **Is the ⚡ still flashing or not showing?**  
Please follow the steps below:

1. Unplug the LED reader from the Transmitter, bring the Transmitter to the Display.
2. Remove the cover from the Transmitter and take out one battery.
3. With the Display on the main screen press and hold the Pairing button on the back of the Display until the message 'NET LEFT' appears (the illustration below shows where the button is).



4. Press the middle (set) button to return to the main screen.
5. Press the Pairing button on the back of the Display for one second so that 'PAIRING' is displayed.
6. Press and hold the Pairing button on the Transmitter **and whilst holding it:**
  - 6a. Replace the battery.
  - 6b. Wait for the green light to show on the Transmitter next to the Pairing button.



7. When the green light comes on, release the Pairing button then replace the cover of the Transmitter and reconnect the LED reader.
8. The Display will now be showing 'Paired'.
9. Press the middle button on the Display to view the main screen. The ⚡ should now be on.

## Safety notice

It is important to observe some simple safety precautions when using this product. Please read this important information before continuing. Safe operation of the Solo is impaired if used in a manner not specified by the manufacturer.

The Solo product is designed to be installed simply and without the need for a qualified electrical installer. There is no need to open fuse boxes or to connect or disconnect any cabling. It is designed to be used inside a suitable building or meter cabinet.

Do not fit rechargeable batteries.

For use in dry environments only.

To protect the environment, this product and batteries must be disposed of safely at the end of their life. Please take to a recycling centre for safe disposal.

Keep the Solo away from water and other liquids. Disconnect before cleaning and do not immerse in water or other liquids. Please contact Green Energy Options if any components appear damaged or faulty.

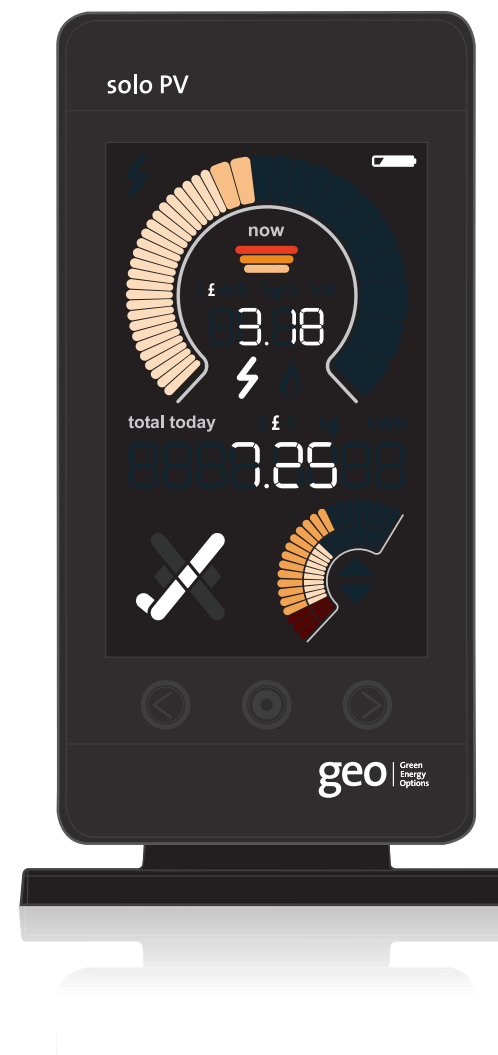
## Further Information

Please refer to the user manual and our website: [www.greenenergyoptions.co.uk/our-products/solopv](http://www.greenenergyoptions.co.uk/our-products/solopv)

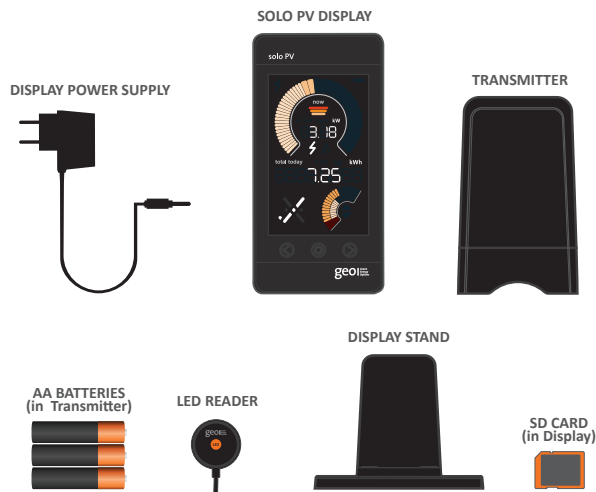


# Solo PV Display

## Installation Guide



## What's in the box?



**Note:** We strongly recommend that you only power up the Display using the power supply provided.

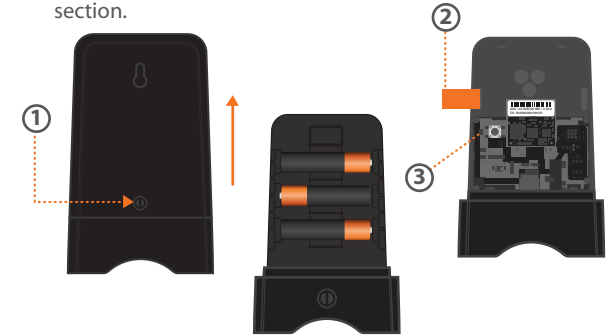
## Step 1 – Display

1. Begin the set-up by powering up the Display with the power supply provided.
2. When powered up the Solo PV Display will cycle through the software version (02.06) then 'Card in' screen followed by the main screen.
3. Hold the middle (set) button in for 3 to 4 seconds until 'set year' is displayed. To change the year use the left and right buttons and press the middle (set) button to confirm. Continue navigating through the settings by pressing the middle button until you are back on the main screen (see Page 11 of the user manual).



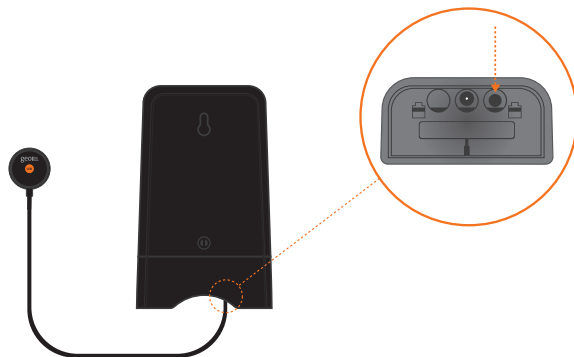
## Step 2 – Transmitter

1. Open the unit by pressing the button and pulling the outer cover away from the bottom.
2. Remove the battery tab from the Transmitter.
3. The green light will flash to show that the batteries are working.
4. On the Display, the ⚡ should now be on (this could take up to two minutes), otherwise please refer to the troubleshooting section.



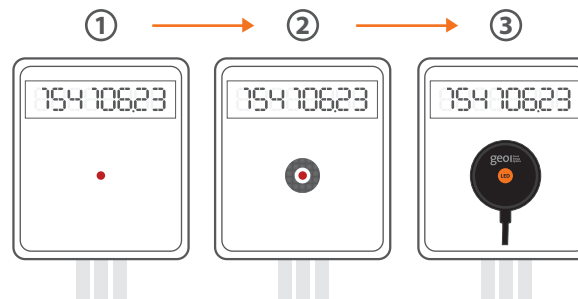
## Step 3 – LED Reader & Transmitter

1. Ensure the LED Reader is firmly connected to the Transmitter, sometimes requiring a second push to make a good connection.
2. The connection can be tested by using a light (e.g. torch) to check that the LED Reader is working correctly. This is done by flashing it at the velcro connected side of the LED Reader and looking at the Display for readings.



## Step 4 – LED Reader placement

1. Find the pulse output on the meter.
2. Stick the velcro circle over the pulse output on the meter.
3. Place the LED Reader over the velcro circle on the meter, ensuring that the GEO logo is facing you.



## Step 5 – Final placement of the Display

1. Check that the ⚡ is still on and not flashing, this shows that the Display is within range of the Transmitter.

Congratulations, the Display is successfully set up and ready to use.

